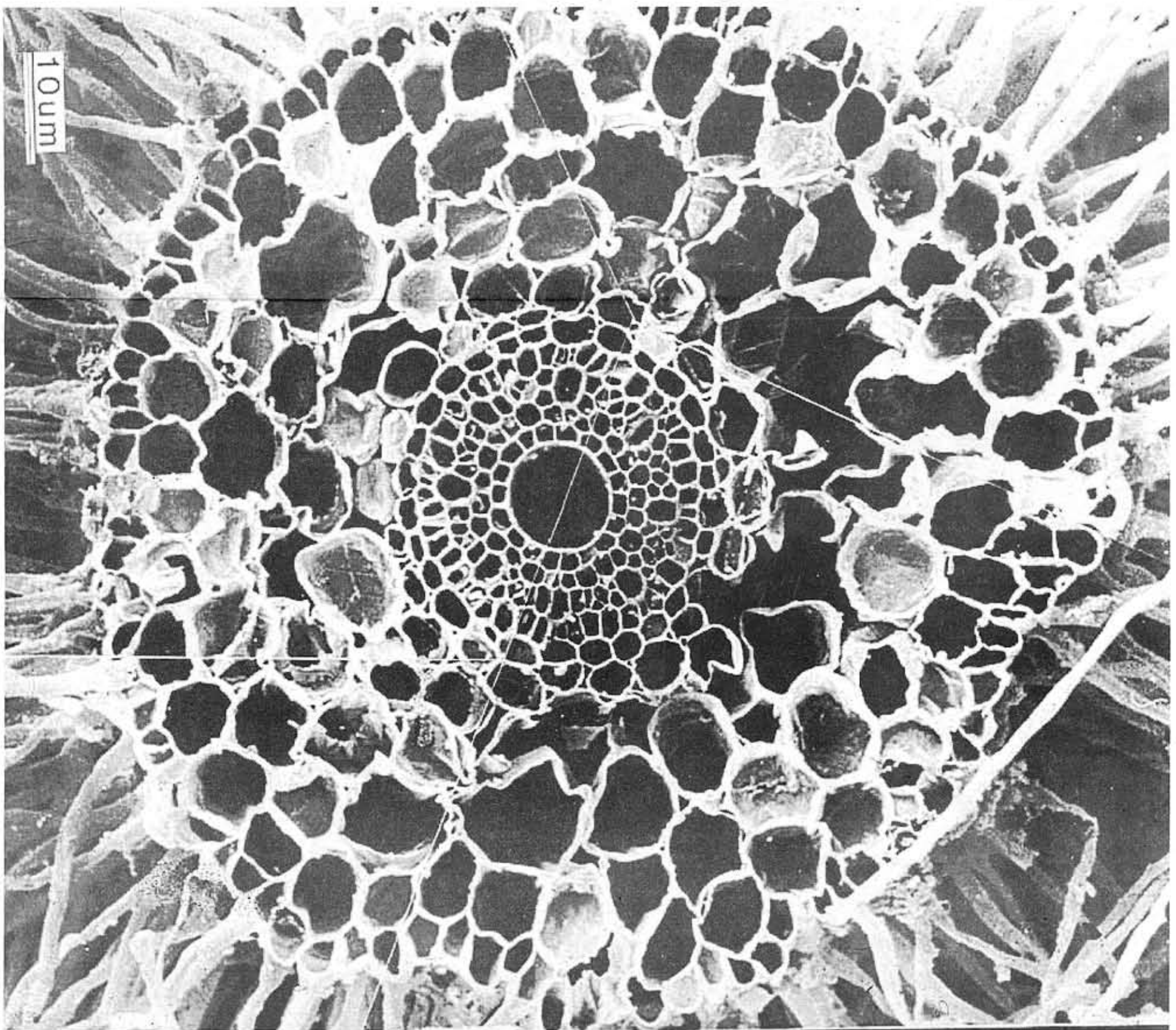


2004
Fall Catalogue

Ecoversity

SUSTAINABLE LIVING • LAND-BASED LEARNING

root (rewt, ruut). noun. The usually underground portion of a plant that lacks buds, leaves, or nodes and serves as support, draws minerals and water from the surrounding soil, and sometimes stores food.



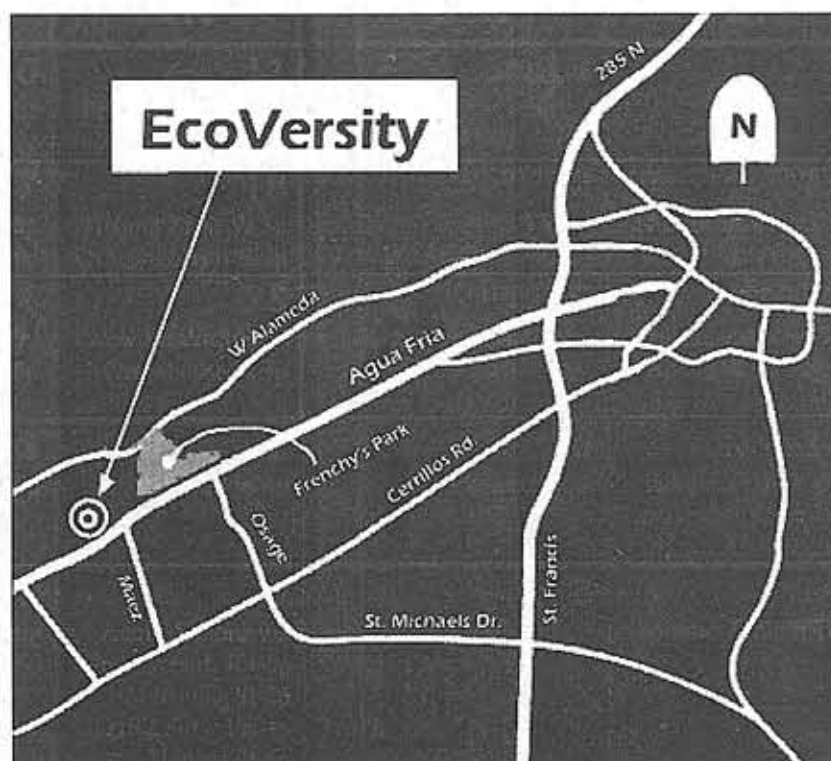
Ecoversity engages students in a process of guided inquiry and reflection by which students pursue mastery within their chosen field of sustainable livelihood while continually deepening and extending their systemic thinking capabilities.

What is EcoVersity?

EcoVersity was founded in 1999 by a launch team of educators, ecologists, anthropologists and activists who gathered to design a school for students seeking innovative and practical approaches to learning from the land. In 2001 the school acquired 13 acres for a campus, centrally located in Santa Fe, New Mexico, and began offering Spring, Summer and Fall continuing education programs. This Spring we pioneered our first Earth-Based Vocations Certificate Program.

We offer a Bioregional Academy that includes continuing education courses specific to the Upper Rio Grande Bioregion, a resource center, and community meeting space for local use.

Planning, design, and building are central to the curriculum. EcoVersity campus is a demonstration, teaching & research site for whole-systems design for Northern New Mexico and beyond.



Programs Registration Policy

Please read the following policy carefully prior to Registration for any Program.

NEW -Enroll Early - Enroll by the course/workshop deadline to reserve your space. Courses and/or workshops with less than eight registered students may be cancelled at the instructor's and/or EcoVersity's discretion after the registration deadline.

Cancellations-

- Registration Fees are non-refundable.
- The Earth-Based Vocations Program and the Permaculture Design Course reserve a non-refundable deposit in case of cancellation.
- To receive a 100% refund on a **course**, cancellations must be made 1 full week before the 1st class meeting. Transfers honored before the second class meeting (for a course- same price of less; valid for 1 year). No transfers issued after attendance of 2nd class.
- To receive a 100% refund on a **workshop**, cancellations must be made 1 full week prior to workshop. Otherwise tuition is non-refundable.

Workstudy positions are available on the land, in the library and with the administration. Visit www.ecoversity.org for work-study application.

Workstudy application deadline: September 1st.

EcoVersity strives to provide affordable education and vocational training for people who are concerned about the Earth and share the vision of a sustainable future.

With your help EcoVersity can continue to grow and prosper. No donation is too small; donations can be made on our website or with the registration/donation form on page 11 of this catalogue.

EcoVersity is tax-exempt under Section 501(c)(3) of the Internal Revenue Code. Donations to EcoVersity are tax deductible. If you have any questions concerning donations please contact Nathan at 424-9797 ext 11.

EcoVersity does not discriminate on the basis of gender, race, religion, ethnicity, age, or sexual orientation.

EcoVersity

SUSTAINABLE LIVING • LAND-BASED LEARNING

Staff

Ana Willem, Assistant Dean, phone x. 10

Amy Pilling, Dean & Curriculum Developer, phone x. 12

Nathan Houchin, Land and Operations Director, phone x. 11

Board

R.P. Harbour

Marie Wilkinson

George Clark

Three Options for Learning: Continuing Education Courses and Workshops

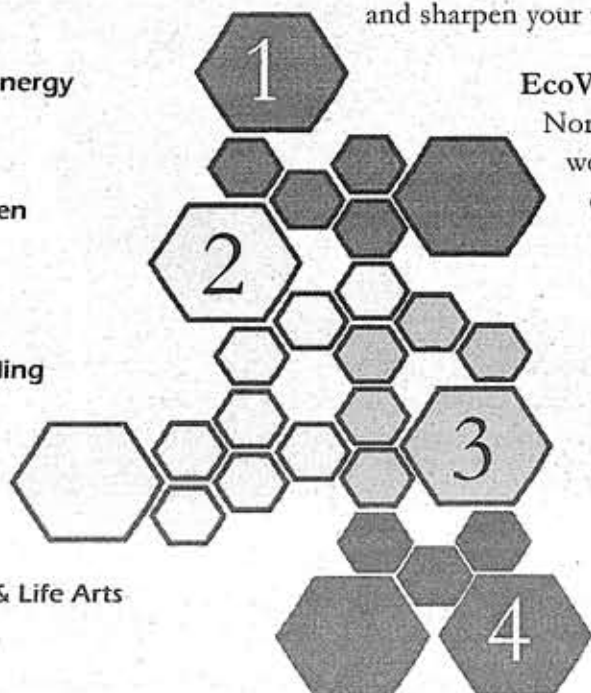
Have you been looking for a different atmosphere for learning, and a different kind of knowledge? Continuing Education Courses and Workshops at EcoVersity provide practical ways to learn land skills and sharpen your vision for a sustainable future.

1. Renewable Energy

2. Land & Garden

3. Natural Building

4. Community & Life Arts



EcoVersity courses and workshops are designed for the climate and conditions of Northern New Mexico. We emphasize hands-on experiential learning leading to real world problem solving. Expanding one's powers of observation, awareness and appreciation of the natural world is a hallmark of EcoVersity training. Our faculty of practical visionaries have each devoted their professional lives to learning and designing from nature.

Permaculture Design Course

Permaculture, from PERMANent CULTURE is a practical system of ecological design of productive ecosystems, which have the diversity, stability and resilience of natural ecosystems.

Permaculture has evolved as a design system for permanent agriculture and ecological human settlement. Permaculture is based on a system of ethics: care for the earth, care for people and the return of surplus to the earth and people.



EcoVersity's Permaculture Course will be taught by Scott Pittman. Scott is an internationally acclaimed designer who has taught in over thirteen countries on four continents. Submerge yourself in this 72-hour certification course to learn permaculture site assessment, design and much more! This class includes lecture, hands-on site assessment and design, field trips, special presentations and optional evening activities. See page 6 for more information.

Certificate for Earth-Based Vocations

The Certificate Program is designed for students seeking to join the fast growing field of professionals who are developing whole system approaches for the design of human environments. Such place-based systems integrate land planning, natural building, renewable energies, water harvesting, and small to large-scale agricultural production. These practical visionaries design from nature, and draw inspiration from such disciplines as permaculture, deep ecology, biomimicry, ecological design, and the bioregional movement. These practices are based on observing and designing from the natural world. While acutely aware of the environmental problems besetting the world, our faculty is dedicated to the research and implementation of practical solutions.

Please see the full 2-page spread about this amazing program. Read testimonials written by students and instructors, and find out if this program is right for you!

10-Week Program

4 days/week
9:00am - 5:30pm

includes Permaculture
Design Course and
\$250 worth of
Continuing
Education
classes.



Followed by...

10-Week
Mentored
Internship

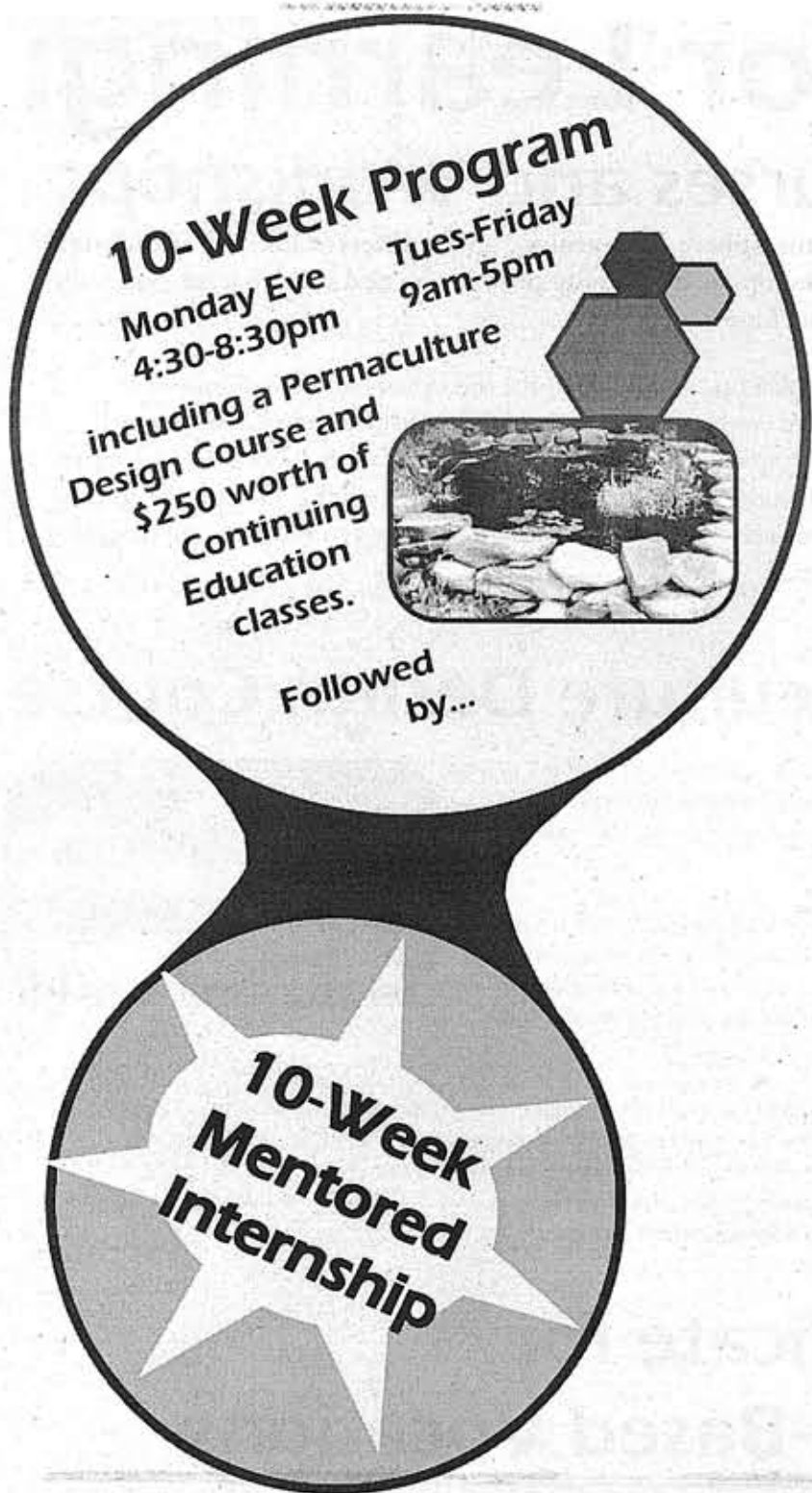
Mycorrhizal mushrooms form a mutually dependent beneficial relationship with the roots of host plants recognized by most ecologists as the function behind ecosystems.
Paul Stamets



Contents:

Registration Policy	2
Certificate for Earth-Based Vocations Program	4-5
Permaculture Design Course	6
Community Arts and Activism	7-8
Land and Garden	9-10
Natural Building / Bau-Biologie	11
Building with Adobe in New Mexico	12-13
Renewable Energy	14
Calendar and Registration Form	15

10-Week Program
 Monday Eve 4:30-8:30pm
 Tues-Friday 9am-5pm
 including a Permaculture Design Course and \$250 worth of Continuing Education classes.
 Followed by...



10-Week Mentored Internship

Class Times:

Aug 28th - Sept 10

Permaculture Design Course
 9-5 daily (1 Sunday Off)

Sept 11 - Nov 5

4:30-8:30pm Monday

9-5:30pm Tuesday - Friday

Tuition: \$4250

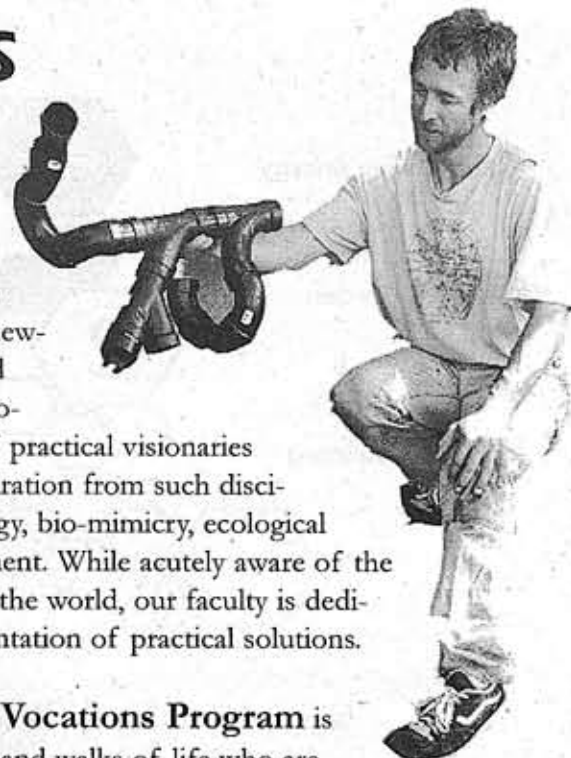
Curriculum:

- Land & Garden
- Renewable Energy
- Natural Building
- Community Arts & Activism

4

Certificate for Earth-based Vocations

Join the fast growing field of professionals who are developing whole system approaches for the design of human environments. Such place-based systems integrate land planning, natural building, renewable energies, water harvesting, and small- to large-scale agricultural production. The EcoVersity faculty of practical visionaries design from nature, and draw inspiration from such disciplines as permaculture, deep ecology, bio-mimicry, ecological design, and the bioregional movement. While acutely aware of the environmental problems besetting the world, our faculty is dedicated to the research and implementation of practical solutions.



Certificate for Earth-based Vocations Program is for learners of all ages, ethnicities, and walks of life who are seeking livelihood skills, both intellectual and practical, for living on the land. The Certificate provides professional development which may lead to work as planners, designers, builders, gardeners, educators, and activists. As leaders and exemplars of sustainable living, our graduates will be equipped to make contributions which regenerate the earth, and revitalize the spirit.

EcoVersity Land-Based Learning

EcoVersity's hallmark is hands-on experiential learning leading to real world problem solving. Certificate students learn to expand their observation skills, awareness, and appreciation of the natural world. The Certificate curriculum teaches and models a full range of sustainable systems, which participants can then apply to the backyards, farms, communities, and open lands of our Upper Rio Grande Bioregion and beyond.

Term 1 (10 weeks) offers students a wealth of information and hands-on learning in Permaculture, Renewable Energy, Natural Building, Sustainable Land & Garden and Community Arts & Activism. Lectures, field trips and projects on campus are mixed with lively discussion and presentations by professionals engaged in Earth-based Vocations. Term 1 culminates in challenging design projects which integrate the fields of study.

Term 2 (10 weeks) is a mentored internship with working professionals. Students choose mentors from among the faculty and large group of visiting professionals and arrange working internships in their areas of interest.



Dryland crops grow 90 percent of their roots in the top 10 cm of soil.

The remaining 10 percent of roots may grow as deep as 2m to tap deep water for 'survival and insurance'.

?



The
EcoVersity Earth-based
Vocations Certificate Program has been an
opportunity for me to expand my horizons and
learn about several fields of study that I have never
encountered before. I have gained theoretical and practical
knowledge in a whole systems approach to thinking about the
world and problem solving. This hands-on, intensive program
challenges you to think outside the box and approach each situ-
ation from multiple levels. It will change the way you look at
the world! It has been an incredible
experience.

Matt Hunter
Earth-based Vocations Student
Spring 2004

Frances Harwood, founder of EcoVersity,
dreamed of a curriculum that would
combine theoretical and hands-on
learning, as well as mentoring and
internships to train future
sustainability practitioners for work
in the real world.

EcoVersity offers the
**Certificate for Earth-based Vocations
Program,** a ten-week integrated training in

Permaculture, Natural Building, Community Arts
& Activism, Renewable Energy, and
Sustainable Land & Garden studies
followed by a ten-week mentored
internship. The Earth-based Vocations
Program is preceded by a required
**Permaculture Design
Course.**

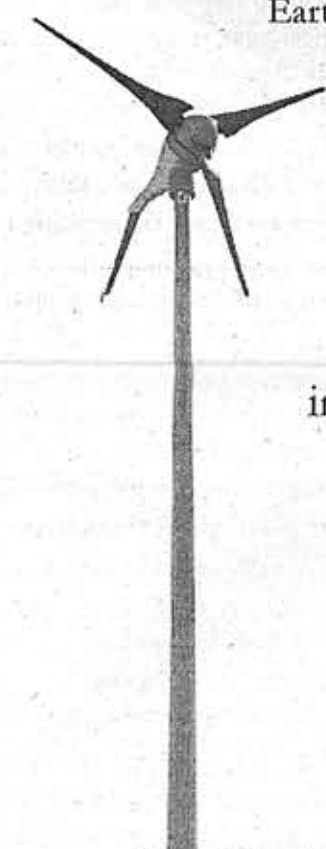
The
EBV Program is a holistic
integrative theoretical and hands-
on education in which I have learned
how I can work to design and create balance
through the design of human systems that
accord with natural systems. I would say that
this is the focal point, in this program, for an
interdisciplinary dialogue.

Jesse Boudreau
Earth-Based Vocations Student
Spring 2004

You will
encounter diverse concepts,
approaches and people; par-
ticipate in hands-on projects,
group exercises and field trips;
and enjoy the rich and varied
experiences of your fellow stu-
dents.

Professionals involved as core
faculty, guest speakers and
instructors, and field trip
hosts will generously
share their knowl-
edge and experi-
ence with you
throughout
this program.

5



My experience in the Cert Program at
EcoVersity began with the belief that a better
world was possible. I had imagined a world with
little to no waste, where I would spend my time
doing things I cared about, and would be able to provide
future generations with the same ability. EcoVersity showed me that

this fantasy was not only possible but necessary for the continued survival of our planet. In addition to
showing that it was possible, they showed me how it was possible. In the course of ten weeks, I went from
feeling like an embittered idealist, to an empowered realist.

Alan Rosenblith, Earth-based Vocations Student Spring 2004

What Is Permaculture?

Permaculture, from PERMANent CULTURE is a practical system of ecological design of productive ecosystems, which have the diversity, stability and resilience of natural ecosystems.

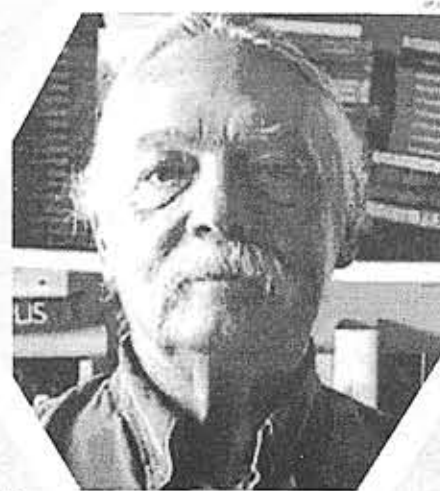
Permaculture has evolved as a design system for permanent agriculture and ecological human settlement. Permaculture is based on a system of ethics: care for the earth, care for people and the return of surplus to the earth and people.

Permaculture ecological land use employs principles of natural systems in the design of beneficial associations to form living systems capable of regenerating and supporting themselves. These ecological design principles, strategies and methods can be applied to urban, village and national scales and can be adapted to any ecosystem.

The philosophy behind permaculture is one of working with, rather than against, nature, of protracted and thoughtful observation, rather than premature and thoughtless action; of looking at systems in all their functions, rather than asking only one yield of them; and of allowing systems to demonstrate their own evolutions.

Permaculture education consists of training in ecological land use planning and the development of sustainable life skills. Permaculture training provides the basis for the development of seeds banks, nurseries and village forest gardens which can supply food, security, jobs, and regenerative enterprise at the local level. The innumerable value added products derived from permaculture forest gardens are produced through the combination of cultural talents and social agroforestry.

Permaculture training empowers people with the tools to achieve local self-reliance through homes designed for energy efficiency, water conservation, waste treatment, soil building and erosion control, seed saving, home gardening, animal management, rangeland restoration, reforestation, forest gardening (multi-storied orchards), fuel forestry, and other practical skills needed for individuals to be economically self-sufficient and ecologically self-sustaining.



Instructor:

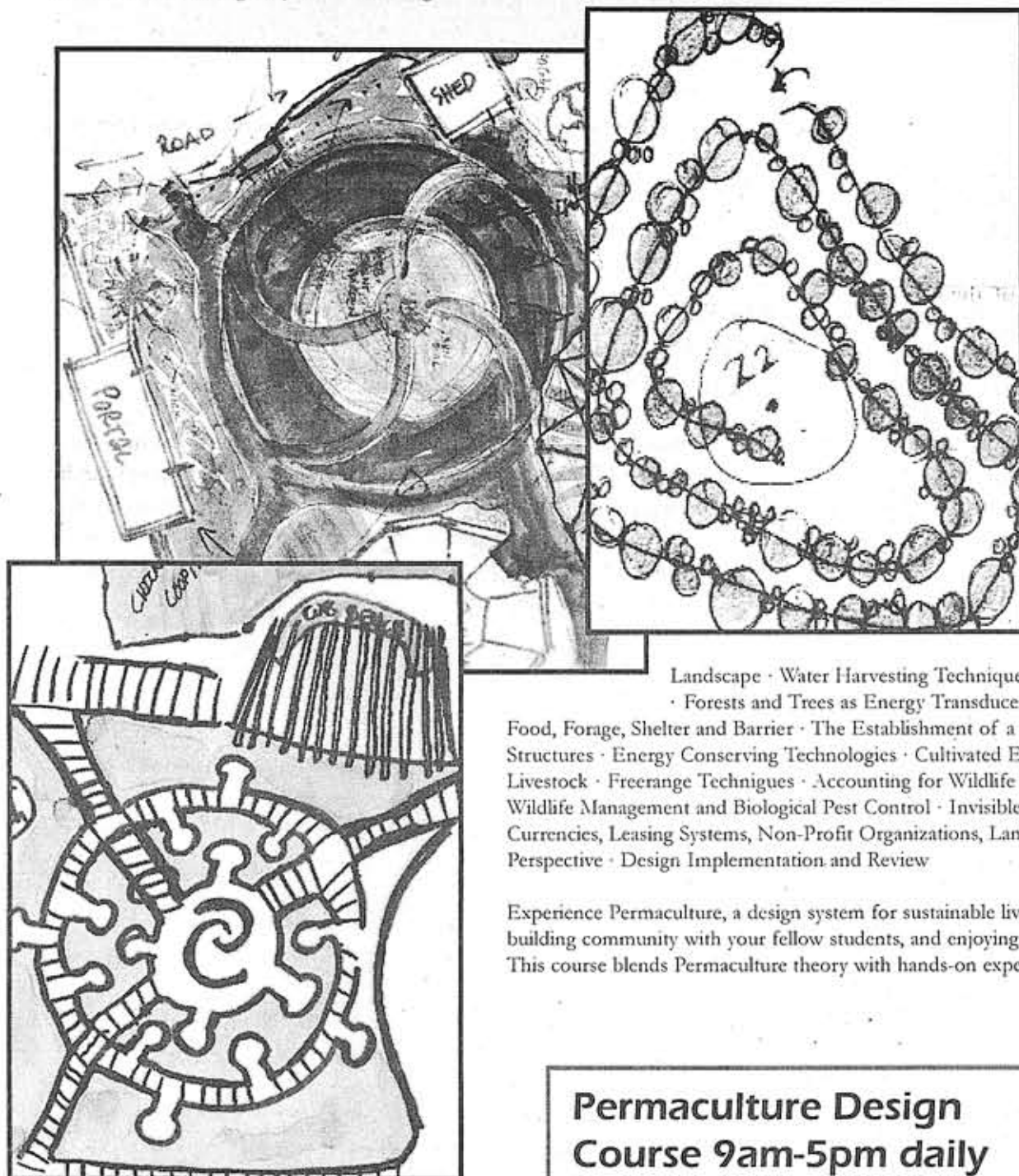
Scott Pittman, founder of the Permaculture Drylands Institute, is one of the foremost teachers of Permaculture in the U.S. and has taught extensively worldwide. Scott co-taught with Permaculture founder Bill Mollison and has helped to establish the Permaculture movement in the Southwest.

During the past twenty years, permaculture has grown into a global grassroots initiative, a blossoming folk movement that diversifies with new cultural adaptations. There are permaculture institutes, associations, and projects in over 100 countries throughout the world in virtually all biomes or ecosystem types.

Permaculture Design Course Topics:

Ethics · Principles of Natural Systems · Functions and Function Stacking · Design Methodologies · Understanding the Site and Reading the Land · Mapping · Analysing the Elements of a Site · Sector Planning · Developing Observation Skills · Patterns in Nature and Design · Edge Characteristics · Pattern in Culture and Traditions · Soil analysis and Interpretation · Keyline Systems · Upper and Lower Slopes · Flatlands · Arid and Humid Landscapes · Large scale Land Restoration Techniques · Water in the Landscape · Water Harvesting Techniques · Grey Water Recycling · Irrigation Strategies · Climates · Forests and Trees as Energy Transducers of wind, Sun, and Rainfall · Managed Forests for Fuel, Food, Forage, Shelter and Barrier · The Establishment of a Forest · Designing for Catastrophe · Buildings and Structures · Energy Conserving Technologies · Cultivated Ecologies · Home Gardens · Zoning · Orchards · Livestock · Freerange Techniques · Accounting for Wildlife · Urban Permaculture · Waste Disposal and Recycling · Wildlife Management and Biological Pest Control · Invisible Structures (Communities, Credit Unions, CSA's, Local Currencies, Leasing Systems, Non-Profit Organizations, Land Access, Urban Systems) · Permaculture Global Perspective · Design Implementation and Review

Experience Permaculture, a design system for sustainable living, while earning your Permaculture Design Certificate, building community with your fellow students, and enjoying the natural beauty of the EcoVersity Campus in Santa Fe. This course blends Permaculture theory with hands-on experiences and fun in a relaxed setting.



Course Goals:

Understanding the Principles, Characteristics, and Ethics of Permaculture design · Reading the Landscape, Site Analysis and Observation · Understanding Sustainable Aquaculture Principles and Watershed Restoration · Effective Management of Micro-Livestock to benefit the land · Optimal Building Techniques and Management of a Sustainable Greenhouse · Creating Gardens and Orchards to form a Species Rich Genetic Ark · Restoration and proper management of the forests · Learning the principles of natural systems and edge effects · Cultivating living soils that are rich in nutrients and organic matter · How to design and build sustainable homes using appropriate technologies · Invisible structures, village design and community economics

Permaculture Design Course 9am-5pm daily with one Sunday off. Lunch is included.

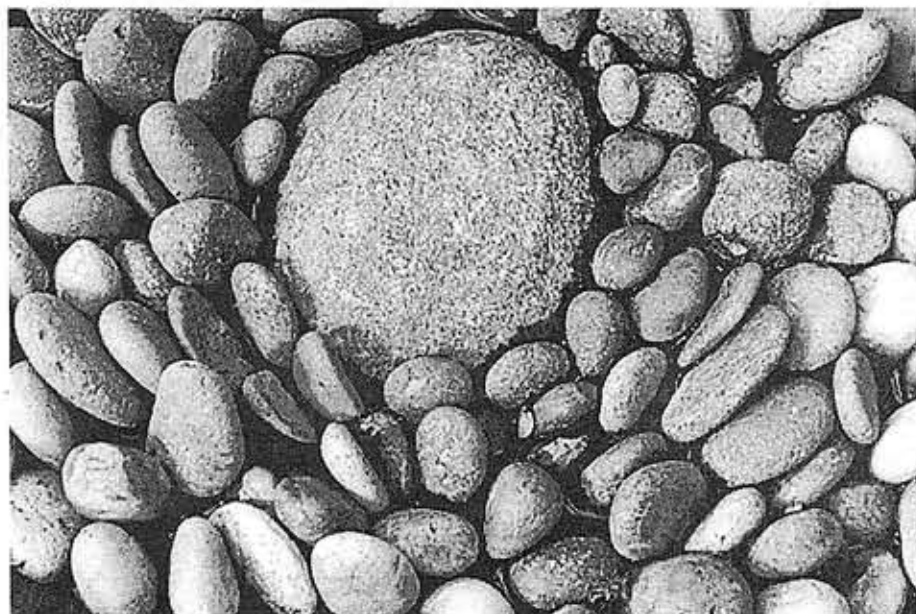
Tuition

\$890

8/28-9/10

6

Community Arts & Activism



Participants in the Peace Corps, WWOOF, Vista and other service and volunteer programs will find permaculture and natural systems training helpful as preparation for mindful service and creative work in developing world situations. Please see our website www.ecoversity.org or call 424-9797 for more information about the Permaculture Design Course, and the Certificate for Earth-Based Vocations program.

Peace Corps Presentation

Daniel Mendieta

Sat. Sept. 11th, 4pm - 6:30pm, FREE

Peace Corps representative, Daniel Mendieta (Russia 2000-2002), will provide general information, show a film, and discuss the many opportunities available to those interested in volunteering worldwide.

The Peace Corps is an international development agency of the U.S. Government, which sends American citizens to developing countries to work on grass-roots projects in agriculture, business, community development, education, environment, health and information technology. Since its creation in 1961, more than 170,000 Americans have served. Ghana received the very first Volunteers 43 years ago. In September 2004, Peace Corps went into its 138th nation, Mexico. Volunteers are currently serving in more than 70 countries. The Peace Corps accepts applications from U.S. citizens who are at least 18 years of age and have an appropriate skill. There is no upper-age limit. Our oldest volunteer is 84. Most of our programs require a college degree, and all of our educational programs require a four-year degree. Non-degreed applicants must have three to five years of experience in business management, farming, ranching or a skilled trade. A background in volunteer service and knowledge of Spanish or French is also helpful, but not required.

Daniel Mendieta, began working for the Peace Corps as a recruiter, after completing his own two year service in Western Russia in 2002. While in Russia he taught English as a foreign language, worked with small business development, and encouraged the use of all available resources to benefit the community. He assisted the community in developing several grant proposals which helped acquire several thousands of dollars in funding for an Internet café, a new English program, and structural additions to his school. Still, Mendieta believes that his greatest achievement in Peace Corps is a two part answer, the life relationships that he has made, and those he helps to send to experience it for themselves.



Chrissie Orr, MA Edinburgh College of Art. Chrissie is an artist, anthropologist, activist, and animator, College of Art, Chrissie has been a circus performer throughout Europe; a muralist in Corsica; and creator of community-based art projects in Europe, Australia, Iran, Turkey, Mexico, and USA. As co-director of the Arran Community Arts Project, Isle of Arran, Scotland, she was awarded one of the first rural arts grants by the Scottish Arts Council. She founded the nationally acclaimed Teen Project in Santa Fe, which was recognized by both the US Congress and the NEA, directed the cross-border Bridge Project between El Paso and Juarez, Mexico, and was guest artist at the University of Michigan. Chrissie has just completed a nine-month residency in rural Georgia on a grant from the Artist & Communities for the Millennium Project. Recently, she has been designing water catchment systems with kids.

We are proud to have Chrissie as our Core Faculty member of the Certificate for Earth-Based Vocations.

Growing Wealth Sustainably: An exploration of your business (idea), your place, your life.

Margo Covington

Sat. Sept. 25 & Oct. 9, 10am - 5pm, \$140

Registration Deadline: Sept. 18th

Business from the ground up: What questions do you have about balancing your business and making a profit while having a good life and optimizing our ecosystem? There are systematic ways of doing them all more successfully at the same time. Come together to explore new ways of looking at business together in a way that answers your questions. This highly participative course will be facilitated and taught by a "sustainable entrepreneur" who has taught both sustainable and standard business classes. Together, you will decide the agenda for the two-day class. From cash flow to materials flow, what do YOU want to explore, learn and create together about new ways of doing business?

Margo Covington: Sustainability & Entrepreneurial Trainer; Systems, Strategic & Action Planning Facilitator, ZERI certified December 2002, also specializes in New Mexico's own Green Zia Environmental Excellence approach, member of NM Environmental Excellence Alliance and serves as Chair of the Sustainable Santa Fe Commission.

The Tree of Life

Sherri Silverman

Fri. Sept. 24th, 7pm-8:30pm, \$7

Sherri Silverman's slide lecture focuses on diverse images of trees in world cultures. Trees evoke in us an array of symbolic meanings, archetypal motifs, and personal memories that have been referred to by a large number of artists and writers on this planet. During the discussion and question session after the presentation, participants will share tree stories from their own lives, both pre- and post-bark beetles.

Sherri Silverman, Ph.D., is an artist, writer, educator, and consultant. She has done Vastu consultations for clients locally, nationally, and internationally. She is listed in Who's Who in America, Who's Who in the West, Who's Who of American Women, and 2000 Outstanding Artists & Designers of the 20th Century. Decades of making art, meditating, and teaching spiritual practices have enhanced Sherri's sensitivity to energy, beauty, and placement. Sherri has lectured on Vastu at the Denver Art Museum and many other places. Her book, *Transcendence Design: Using Vastu to Create Home as Sanctuary, India's Ancient System of Spiritual Architecture and Design*, will be published in the near future. Email: sherri@transcendencedesign.com www.transcendencedesign.com

Community Arts & Activism

Grass Roots Marketing Course (includes Cooperative Marketing Intensive)

Sandy Vaillancourt

Tues. Sept. 28th - Nov. 9th, 6-8pm; Sat. Oct. 9th, 9am-2pm, \$200

Registration Deadline: Sept. 21st

Do you plan to build sustainable houses or to start a nonprofit dedicated to helping our environment or to sell hand made soap. You may need a little help with "getting the word out" about your product or service.

This course will explore basic marketing strategies for nonprofit organizations, small businesses or individuals wanting to sell hand made products or services. In this class, you will create, develop and learn practical grass roots marketing techniques that will build and sustain your endeavor. Core concepts of marketing will be covered as well as strategic planning, budgeting, advertising, promotions & public relations & evaluation. The course will also discuss point of purchase promotions & pricing, and distribution from a retailer's perspective and explore the impact of these decisions on marketing.

Sandy Vaillancourt, recently joined the Bioneers as marketing and membership manager after working for Wild Oats Markets (a natural products supermarket chain) for 8 years as a Regional Marketing Director. She has also taught marketing and international business for the University of Maine along with marketing consulting for the natural products industry. She holds a BA in Journalism and International relations and a Masters Degree in Arts Administration from Columbia University.

Cooperative Marketing Intensive

Sandy Vaillancourt

Sat. October 9th, 9am-2pm, \$75

Registration Deadline: Oct. 2nd

This is a unique opportunity to bring your latest passion or project in life to the workshop, and work in a cooperative learning environment to outline a strategic marketing plan for your project. This is a beginning level intensive that will enable you to understand the process of cooperative marketing, budgeting, competition, target research, media strategies, and leveraging co-sponsorships. This intensive would be ideal both for people working in the non-profit and public service fields, as well as for individuals wanting to understand marketing basics, and apply them towards personal or vocational endeavors.

Sandy Vaillancourt, see above bio.

Pueblo Pottery

Kathy Sanchez & Evelyn Naranjo

Tues. & Thurs. Oct. 12th - 28th, 6pm-8:30pm;

Sat. Oct. 23rd & 30th, Time: TBA (firing days), \$185

Registration Deadline: Oct. 5th

Enjoy a process of spiritual awakening while journeying on clay woman's path. This course will integrate the techniques of making traditional coiled blackware pottery within the socio-cultural context of today's Tewa women's worldviews. The course will include firing on the pueblo and home site visits with family to gain insights through various modalities. Participants will create traditional pottery making tools while learning about the connectiveness to Mother Earth.

Kathy Wan Povi Sanchez, MA and Evelyn Than Povi Naranjo are sisters, educators, founding members of Tewa Women United, a gathering of Northern Pueblo Tewa women from New Mexico advocating for positive social changes, and members of the Maria and Julian Martinez family of San Ildefonso potters. They bring a combined 60 years of experience making traditional pottery to the course. Kathy considers herself a community activist. She has developed a visual model for understanding the management system of contradictory information because of her experience living in two totally different cultural ways of thinking. Kathy was Green Party candidate for Lt. Governor of New Mexico in 2002. Email: tewawu@msn.com



Vastu: Attuning to and Gaining the Support of Nature Through India's System of Design-Architecture-Sacred Space

Sherri Silverman

Fri. Oct. 15th, 7pm-8:30pm; Sat. October 16th, 9am - 4:00pm, \$65

Lecture Alone: \$7; Registration Deadline: Oct. 9th

Vastu is the spiritually based system of design-architecture-sacred space from ancient India. It recommends alignment with earth energies and the cosmic forces of nature, the cardinal directions, and the five elements of earth, air, fire, water, and space. In addition to honoring the environment, Vastu recommends the use of natural materials.

The Friday evening lecture will introduce Vastu, its history, and some of the basic concepts. The workshop will go into greater depth and include some experiential exercises. Learn basic principles of Vastu, its history, how it differs from and was the basis of Feng Shui, and lots of practical information to honor and enhance the energy, beauty, and serenity of your home or office. The use of two- and three-dimensional yantras (sacred geometry) and mantras (sound vibration) to rectify spatial energies will be covered as well. Participants will study and perform a ritual home-blessing artform and meditations.

Sherri Silverman, Ph.D., see bio on previous page.

Traffic Survival

Laurence Malone

Sat. Oct. 9th, 10am-4pm, \$65

Registration Deadline: Oct. 1st

It's a dog eat dog world out there, especially if you are a cyclist in the city of Santa Fe. You don't have to let traffic get the best of you. This workshop aims at encouraging energy and mobility self-reliance through confident and effective bicycling. Learn to enhance your abilities in the areas of Traffic Sense, Survival Skills and Bike Handling by taking a ride with Laurence Malone, a former racing champion, National Bike Team coach, and avid bicycle commuter. En route, you will acquire critical insights into traffic behavior that will make you a wiser, more patient driver, and a safer and more skilled cyclist.

A cyclist for 40 years, **Laurence Malone** is a six-time US National Champion bike racer and former coach of the national team. A contributor to books, films and magazines, he has served as consultant in urban planning and bicycle litigation and conducts seminars and alternative transport programs. His research and studies take a hard look at the factors that have marginalized cycling and allowed the automobile infrastructure to dominate the political and environmental landscape. Laurence has a BA in History from UC Santa Cruz. Email: admin@ecoversity.org



Land & Garden

Herbs of the Fall

Tomas Enos, Janet Snowden
Wed. Sept. 15th - Nov. 3rd, 6pm - 8:30pm, \$185
Registration Deadline: Sept. 8th

New Mexico herbs and flowers will be putting on a magnificent display this fall. We will begin the course with herb walks to study and sustainably collect edible and medicinal plants. Using these materials, we will then cook wild foods and make preparations for personal health, such as foot and face treatments. Emphasis will be placed on learning the uses of barks, roots and seeds. We will be learning botany, using plants from A to Z, agaves and yuccas. We will also be harvesting, processing, cooking, and making herbal preparations.

Join us for this seasonal approach to learning and understanding plants. By joining with the seasonal rhythms, we can keep in tune with the biological cycles of our bioregion. This autumn course initiates a year long sequence of courses exploring the world of plants as our ally in maintaining balance and optimal health.

Tomas Enos, BA Ohio University, MA Prescott, Ph.D. Union Institute & University, is an ethnobotanist and practicing herbalist. The owner of El Milagro Herbs in Santa Fe, Tomas has grown, wildcrafted, and manufactured herbal products for over 12 years. His doctoral dissertation described curanderas in Oaxaca, and he has extensive contacts with traditional healers in Latin America. He has taught herb classes at IALA, the Santa Fe Indian School Agroecology program, and has led tours to find herbs and herbalists in Mexico, Costa Rica, and Ecuador. For more information, email Tomas at elmilagro@cnsnp.com

Janet Snowden, Doctor of Oriental Medicine and herbalist, has grown, wildcrafted, and used native plants throughout the Southwest. As a nature photographer she has shown her herb photos in local galleries. Her teaching experience includes leading herb classes at the International Institute of Chinese Medicine and the New Mexico Academy of Healing Arts. Janet also owned a 30 acre herb farm for 15 years in Texas. For more information, email Janet at snowflower@cybermesa.com

Remember to register by the deadline - 1 week before each class or workshop starts!

Creating Your Own Labyrinth

Priscilla Logan
Sat. Sept. 11th, 9am - 4pm, \$65
Registration Deadline: Sept. 4th

Learn the fundamentals of creating your own seven circle labyrinth in this one-day workshop. We will be installing a labyrinth at the EcoVersity campus on September 11th, the day of the class. This course will give you the basics of dowsing in order to connect with the "information flow that mother earth is sending us." The class will mark that information on the earth to form the labyrinth's template that will then be filled in with rocks in the concentric circles. Labyrinths can be used to calm or to inspire, to quiet or to awaken. The choice is left to you, the walker of the path. Bring lunch, outdoor clothes, 4 wire coat hangers, and ten 4-6 inch rocks.

Priscilla Logan, has been creating labyrinths in New Mexico for many years in schools, mountain valleys, and public places. She began her involvement with labyrinths after feeling its healing energy and deciding that her students would greatly benefit from walking its path. Her work as a pioneer in creating outdoor classrooms through the public schools in New Mexico won her the Outstanding Environmental Educator of the Year Award. Contact plogan@outdoorclassroom.org for more information.



Drought Gardening-The Fundamentals

Priscilla Logan
Sat. Sept. 18th, 9am - 4pm, \$65
Registration Deadline: Sept. 11th

In this comprehensive one day organic gardening course we will cover techniques for successful fall and winter planting in northern drought stricken New Mexico. Emphasis will be placed on low water gardening through alternative methods in water collection, watering, soil preparation and additives, intensive plant placement, and mulching. The course will include hands-on and demonstration learning. Bring your own gloves, hat, lunch, and work shoes.

Priscilla Logan, see bio above.



Rain Gardens - Celebrating Natural Processes

Arina Pittman
Fri. Sept. 24th, 6pm - 9pm, \$15
Registration Deadline: Sept. 17th

This class will be of interest to home owners and design professionals wishing to explore design possibilities for water catchments and water harvesting. The poetry of rain in the semi-arid environment can be explored not only from an ecological or technological standpoint, but also from a perspective of beauty, art and expression of natural forces through the built form. An extensive slide show will inform participants about international water catchment projects, ranging in scale and application from rural to urban environments. Art, architecture and landscape design solutions will be presented to spark creativity among attendees and to give local water management projects a deeper dimension while gaining an ability to express the awe and fascination with rain through the use of design and the built form.

Arina Pittman's graduate thesis at the School of Architecture and Planning at the University of New Mexico was on the subject of rain as an ecological force in the urban environment. She collected a large image library of relevant projects around the world and among different cultures. A slide show and discussion of various projects will be the center piece of this workshop.



Land & Garden (continued)

Nature Constructed - A Greenhouse Workshop

Arina Pittman

Sat. & Sun. Sept 25th & 26th, 9am - 3pm, \$140

Registration Deadline: Sept. 18th

Join us in the EcoVersity Biodome to learn how to create a healthy and productive greenhouse ecosystem; including plants in beds, on the ground and in the pond. Arina Pittman, permaculture teacher and designer, will explain and demonstrate the concepts of plant guilds, the role of beneficial insects and aquaculture, and soil and pest management both in a classroom setting and in action in the Biodome. We will explore placement of the greenhouse on the landscape with the relationship to other structures (buildings, water catchment, compost, etc), and the organization of the interior space for multiple functions (productivity, living space, biodiversity, etc). Arina will share her knowledge, observations, recommended literature and perhaps some great plants. Each participant will learn to create beneficial plant combinations to support health and productivity of the entire ecosystem. The culmination of the workshop will be a design plan for the existing greenhouse, and the construction of a multifunctional grow area for subtropical, temperate and aquatic plants.

Arina Pittman see bio on previous page.

Joel Glanzberg, BA Saint John's College, has studied with John Todd at New Alchemy Institute, Permaculture with Bill Mollison, and is now employed by Regenesi. He co-founded Flowering Tree with Roxanne Swentzell; a permaculture integrated homestead at Santa Clara Pueblo. Joel has taught courses at University of New Mexico, Prescott College, the Desert Botanical Gardens in Chinle, Arizona, and in Peru and Brazil. His many talents include landscape design, blacksmithing, carpentry, and work as an adobero. Joel leads the Land and Garden section of the Certificate for Earth-Based Vocations Program.



Environmental Educator's Outdoor Experience

Priscilla Logan,

Wed. & Thurs. Sept. 29th & 30th, 8:30am - 3:30pm, \$140

Registration Deadline: Sept. 22nd

This course is for adults interested in developing skills for introducing children to the wonders of nature. People in government and private environmental organizations, parents, teachers, etc. can benefit from this hands-on course in which we take classes of children (ages K-12) out into the natural world to increase learning and appreciation of nature. The outdoor activities will include exploring insect and bird habitats, soil composition, and gardening. Each outdoor class will be followed by a discussion of curriculum, teaching techniques and classroom management. Bring lunch and outdoor clothes.

Priscilla Logan, see bio on previous page.

Garden Series -Harvest Time

Arina Pittman

Sat. Oct. 9th, 23rd, 30th & Nov 13th, 9am - 4pm, \$210

Registration Deadline: Oct. 2nd

As fall's promise for abundance is near, it is not only the time to harvest the fruits of one's labor, but also time to receive feedback from the land and evaluate the season's lessons. In this class, we will take field trips to successful gardens in the area; examine EcoVersity's Garden from the standpoint of sustainable design and management; create an extensive plant palate for our new forest garden; and plant to enrich the biodiversity of the campus, protect the vegetable garden from the elements, and to grow more food. We will have several hands-on work sessions ranging from building soil, planting food forests, and learning to make our gardens more sustainable, so wear sturdy shoes and bring work gloves and sun protection.

Arina Pittman see bio on previous page.



Remember to register by the deadline - 1 week before each class or workshop starts!

Green Solutions for Indoor Pollution

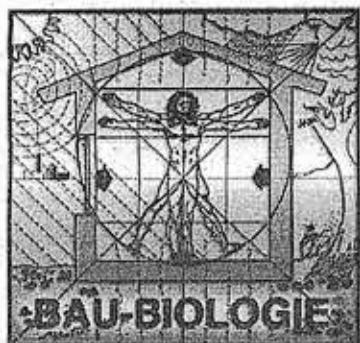
Carla Cross

Sat. Oct. 2, 9am - 4pm, \$65

Registration Deadline: Sept. 24th

The indoor air in your home can be more seriously polluted than the outdoor air even in the largest and most industrialized cities, contributing to asthma, allergies, headaches, chronic respiratory symptoms and other health problems. This course will help participants identify sources of petrochemically-based pollution in products that are used in their homes every day, including personal care, laundry and cleaning products. Learn how to choose healthier alternatives that are kinder to the environment. Other ways to help make your home a healthy haven will include a discussion of such topics as furnishings, paints, flooring, heating systems, pesticides and mold & mildew.

Carla Cross, LMT, RMTI, CRMI was inspired to teach about toxins in the home environment through her personal experience of and recovery from multiple chemical sensitivities (MCS). She has studied indoor air quality through the Institute for Bau-Biologie & Ecology and is certified by the Indoor Environmental Standards Organization as a Residential Mold Inspector. Carla is co-owner of Stonehenge Inspections, offering home inspections and environmental testing and consulting. She has 19 yrs of experience in natural healing as a massage therapist, health consultant and teacher at the New Mexico Academy of Healing Arts.



Natural Building

International Institute for Bau-Biologie & Ecology (IBE)

presents a seminar by Helmut Ziehe at EcoVersity

Institute for Bau-Biologie & Ecology (IBE)

Seminar: Indoor Air, Water, and Materials

Helmut Ziehe

Thu.-Tues. Sept. 16-21, 9-5pm, \$1625

Register with the Institute for Bau-Biologie & Ecology

www.bau-biologieusa.com (under seminars) or call 727/461-4371

IBE Seminar to be held on EcoVersity Campus

What you don't see in your air can make you sick. Find out what contaminants may be present and how to get rid of them. Detect toxic substances in your water and what you can do about them. Learn to evaluate building materials using criteria not generally considered in our world today. Find out which materials are safe to use and which to avoid. This class will encompass everything from windows to walls to floors, and the materials that cover them. The IBE Course Handbook (distributed at class); EPA booklet The Inside Story; and IAQ Starter Kit Equipment & Supplies - value \$575.00 included in the Seminar Fee. See website for details.

Helmut Ziehe received his Dipl. Ing. Architect degree from the Technical University, Berlin and a post-graduate degree in Tropical architecture from the AA School of Architecture in London. As an architect, he has planned hospitals, hotels, housing units for small communities and small-scale industrial developments in many countries in Europe, including Sweden, Denmark, Greece, and Great Britain, as well as in North Africa and Nicaragua. He studied Bau-biologie with one of the founders of the movement, Professor Anton Schneider and later translated Professor Schneider's Correspondence Course from German into English. In 1984 he founded the International Institute for Bau-biologie and Ecology (IBE) in England and brought it to the United States in 1986. Currently, he is President and Chairman of the Board of the non-profit Institute in Clearwater, Florida.

IBE is a 501 (c) 3 non-profit educational organization whose mission brings together design methods and technology to provide the information needed to create healthy homes and workplaces. IBE's main objective is to educate - specifically, to help people realize that homes and workplaces can be created to bring the benefits of both health and aesthetics into their living environments. Bringing awareness to the health hazards that may exist in our living spaces not only improves health and provides a sense of well being, it also has an impact on the survival of this planet. This knowledge will raise awareness, provide tools for solutions, and promote effective ecological practices for our future generations.

Growing Gourmet Mushroom for Cooking and Health

Danny Rhodes

Sun. Oct 24th, 9am-4pm, \$65

Registration Deadline: Oct. 17th

This course will demonstrate a simple method for growing mushrooms in your own kitchen. A recently developed method using hydrogen peroxide makes home cultivation easy, fun and inexpensive. Students will observe and practice cultivation, and will receive a starter batch of oyster mushroom spawn in growing medium so that they can harvest fresh oyster mushrooms at home. The course will also include identification of the main types of edible mushrooms, a brief history of fungi cultivation, and an overview of the mushroom ecology.

Danny Rhodes developed his interest in mushrooms while attending the Western Culinary Institute in Portland, Oregon. Paul Stamets' presentations at the Telluride Mushroom Festival and at the Bioneers Conference inspired him to grow mushrooms commercially. He is the founder of Desert Fungi, and sells his mushrooms to the public at the Santa Fe Farmers Market and to businesses in northern New Mexico.



Scott and Arina

Scott and Arina Pittman have a lot in common. A beautiful house they designed and built, a pond, 12 or so turkeys, and a brood of chickens all on a beautiful permaculture sight in Pojoaque called Las Barrancas. Their similarities don't end there.

This pair met in Belarus at a Permaculture Design Course Scott Pittman taught 8 years ago.

Today, they are both teaching Permaculture and Gardening at EcoVersity and beyond. This year, Scott has been involved with permaculture projects in Haiti. In the meantime, Arina has been spending a lot of time this past growing season in the EcoVersity garden, helping us take baby steps into what will eventually become a Permaculture Site Model for the bio-region. This summer, Scott and Arina team taught the Permaculture Design Course, which resulted in a site analysis and preliminary designs for several different zones within the EcoVersity campus. This campus is a better place thanks to their continued insight and involvement with its development.



Building with Adobe



Dar al Islam, a Legacy of Hassan Fathy in New Mexico

An Islamic mosque might seem an unlikely place of worship in a region known for its devotion to the faith of the Spanish throne. But if you visit the Dar al Islam mosque, hidden away in the hills of the Rio Chama valley, you'll find a stunning structure of adobe topped by a softly sculpted dome that seems very much at home in its high-desert environment.

Built in 1981 by renowned Egyptian architect Hassan Fathy to resemble the mosques of north and West Africa, Dar al Islam was originally intended to serve as the centerpiece of a community of schools and living quarters for North American Muslims. Fathy devoted himself to housing the poor in developing nations and deserves study by anyone involved in rural improvement. Fathy worked to create an indigenous environment at a minimal cost, and in so doing to improve the economy and the standard of living in rural areas. Fathy utilized ancient design methods and materials. He trained local inhabitants to make their own materials and build their own buildings. Climatic conditions, public health considerations, and ancient craft skills also affected his design decisions. Based on the structural massing of ancient buildings, Fathy incorporated dense brick walls and traditional courtyard forms to provide passive cooling.



El Rito Campus of Northern New Mexico

Community College: Begun in 1907 as the Spanish American Normal School, the El Rito Campus of Northern New Mexico Community College is becoming the campus of traditional arts including Adobe, Rio Grande Weaving and Spanish Colonial Woodworking and home of the Adobe Association of the Southwest. The El Rito Campus remains a stately, grassy, tree-shaded campus lined with stone walls containing several monumental adobe buildings in a small village. The spectacularly renovated Cutting Hall provides a state of the art auditorium for special presentations and conferences. It is connected to the two-story dormitory and dining hall, also adobe. The full-time Adobe Program of the Department of Southwest

Construction covers construction from foundation to roof the first year with the second year available for contracting and business skills. It is the only such program in the USA.

12

EcoVersity and Northern New Mexico Community College at El Rito

collaborate on a two-phase project to build an adobe structure with a dome.

Phase 1: NNMCC class: "Adobe 102" builds the foundations and walls
Phase 2: EcoVersity's workshop: "Building an Adobe Dome Roof" completes the structure with a beautiful adobe dome.

NNMCC presents:

Adobe 102, Wall Design and Construction:
A Three-Credit Hour Class with Classroom and Hands-On Instruction

Quentin Wilson

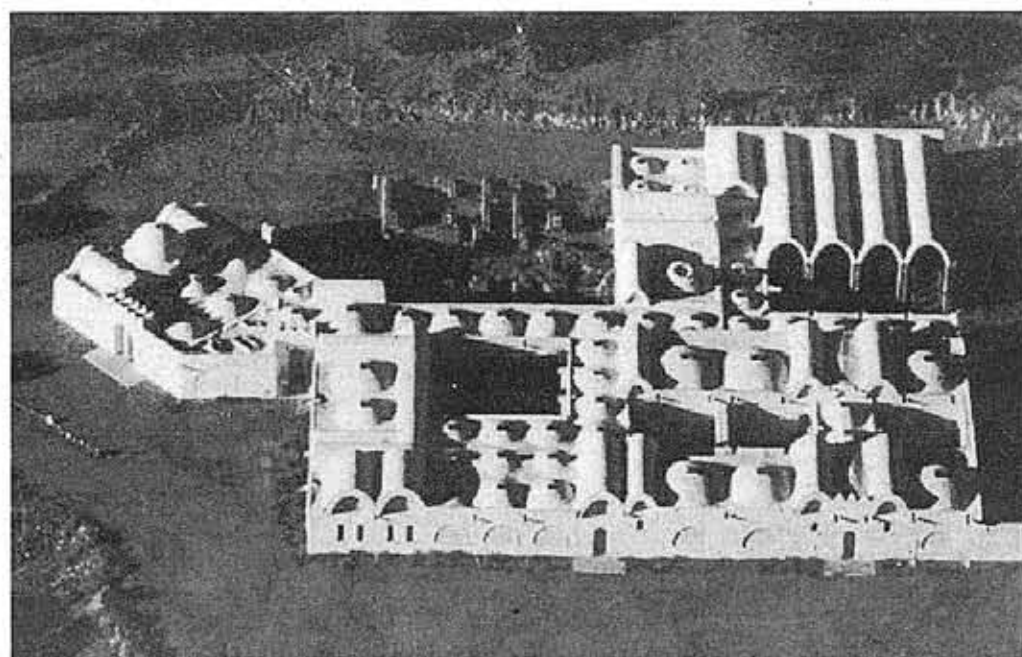
Mon., Wed. & Fri. Sept. 8 - Oct. 8, 8:30am - 3:30pm, \$96.50

Contact NNMCC Registrar, Donald Martinez, to register: 505/ 581-4120 or donmart@nnmcc.edu. Contact Quentin Wilson with course questions: 505/ 581-4156 or qwilson@nnmcc.edu

This NNMCC class covers the necessary elements involved in constructing adobe walls: building foundation footings, stem walls and alternative foundation systems; making adobe bricks and mortar; laying adobe bricks in the wall using two systems to maintain corner alignment and vertical walls; producing openings for doors and windows using rough bucks and gringo blocks; sizing and placing lintels over openings; and installing a bond beam at the top of the wall to tie the building together and receive and spread the load of the roof system.

NNMCC's major project for 2004 will be the construction of the foundation and walls of a 12-foot square meditation building just off Agua Fria near EcoVersity in Santa Fe. The first session will meet in the classroom above the Administration Building on the El Rito Campus. Some subsequent classes will meet at the worksite in Santa Fe. EcoVersity will follow this class with a workshop by Simone Swan and Jesusita Jimenez, Adobe Dome Design and Construction, which will build an adobe dome roof to complete the basic shell of the building.

Quentin Wilson chose adobe to make house models in the fifth grade. By the seventh grade he made full-size adobe bricks in his Albuquerque back yard. In 1970 he moved to Ojo Caliente with Maria and raised three children in a run-down, abandoned adobe home which the family reclaimed, renovated, modernized and enlarged. After teaching high school and college math for 5 years, he began to earn his living in solar adobe construction beginning with project management and construction instruction for the Sundwellings Demonstration Project built with 18 students at Ghost Ranch in 1976. His mentor was Peter van Dresser. Following that, he built adobe homes for 25 years as a licensed general contractor while continuing to teach evening and weekend solar adobe classes throughout the Southwest. In 1995, Quentin organized the Department of Southwest Construction at Northern New Mexico Community College while tapering off his construction business. Now beginning their ninth year, the adobe classes represent the only full-time adobe construction program in the USA. After 35 years the family homestead is now quite ready for a new cycle of renovation and a second bathroom.



in New Mexico

Egyptian architect Hassan Fathy's Architecture for the Poor (original Egyptian title: Architecture for the People) was translated into English in 1973, when Earth Day and the Ecology movements were taking off in the US and Europe. His work drew attention from these movements because it embodied the notion of sustainable design: designing with climate and local culture in mind, using locally available materials (mud brick), and making use of the inherent character of natural materials to create systems in buildings such as solar ventilation.

• Building an Adobe Dome Roof - Hassan Fathy-style

Simone Swan and Jesusita Jimenez

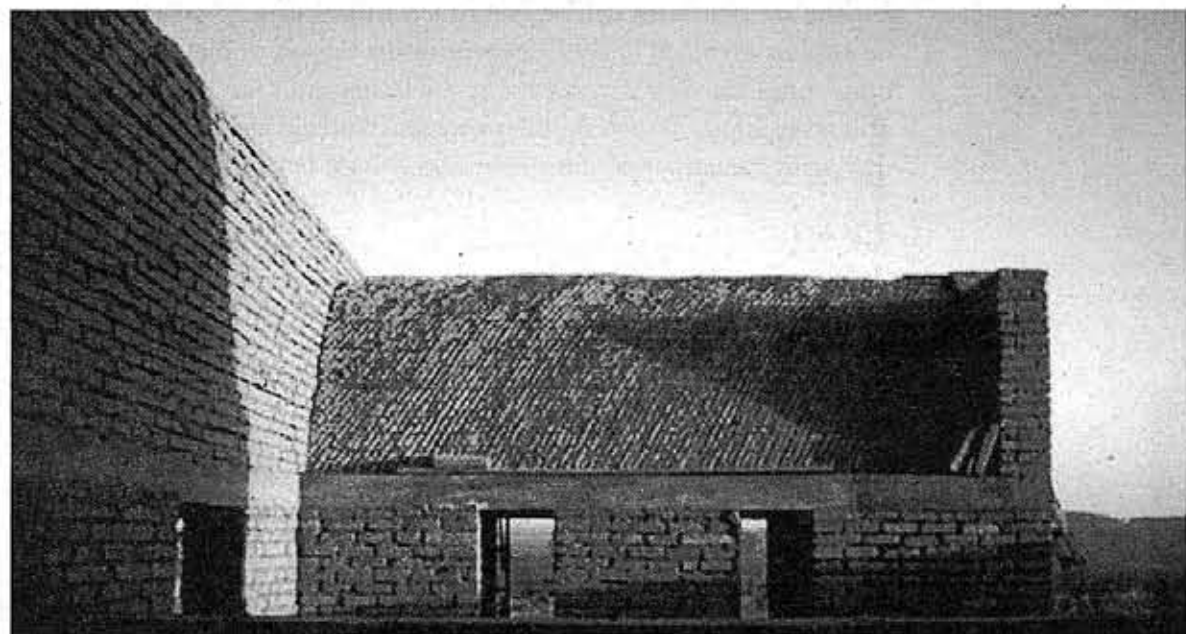
Fri. - Sun; Oct. 8th - 10th, 9am - sundown, \$195

Registration Deadline: Oct. 1st

Join Simone Swan and Jesusita Jimenez to complete the meditation building started in the NNMCC adobe construction class by building an Egyptian-style adobe dome roof without wood. Simone, designer/builder and adobe advocate who apprenticed with Hassan Fathy in the '70s, and Jesusita, master mason, plasterer and project manager, carry on Fathy's legacy by reviving indigenous building techniques for owner-built cooperative housing using natural materials. Simone and Jesusita will teach us the theory and the practical construction techniques to create dome roofs atop square buildings using squinches (corner arches) and other tricks of the trade. We will be working all day outside, so wear work gloves, clothing and shoes, and bring sun protection, water and a sack lunch.

Simone Withers Swan grew at age 3 into an obsessive sketcher of floor plans and was seized with a passion for urban planning when playing with toy cars in the sand. Born in America, she was educated in French and English in schools of the US, France and central Africa. After raising two children, Simone Withers Swan forged a career in art book publishing then founded a public information agency, Withers Swan in Manhattan. Clients numbered universities, art museums, marginal filmmakers, with pro bono work for budding environmental organizations. She served as founding director of the Menil Foundation in Houston and New York, running programs in art, film, energy conservation and alternative energy, while sharing responsibility in the creation and administration of the international activities of the ecumenical Rothko Chapel in Houston. In 1977 on reading Hassan Fathy's "*Construire avec le peuple*," (*Building With the People*, but at U of Chicago Press altered to *Architecture For The Poor*) she left to study architecture with the great master in Cairo, then architectural history at Yale with Sculley. As a tourist from New York she discovered the Big Bend region of Texas and settled there arbitrarily in 1994 to build low cost housing a la Hassan Fathy and to teach adobe building and adobe roofing. The Adobe Alliance grew out of this experience and here workshops are held in adobe building from the foundation to the vaulted or domed roofs, to be plastered with a sturdy, really impermeable mix of clayey earth, straw, prickly pear juice and horse manure. She and her catahoula hound Hassan Fatima live and work from October to May on a mesa overlooking the Rio Grande, encircled by tiers of blue high sierras, the Big Bend peaks to the east, the Chinati range to the north. simone@adobealliance.org.

Maria Jesus Valenzuela de Jimenez (Jesusita) was born and raised in Tierras Nuevas, Chihuahua, Mexico, just south-of the Texas border on the Rio Grande. Jesusita married Jesus Manuel Jimenez, adobe builder, and has 3 children and 7 grandchildren. From her husband she learned the basic trade of albanil and, fourteen years into marriage, built with her family their own adobe house. In 1993 she joined forces with Simone Swan, from whom she learned the engineering technique of building woodless adobe roofs in the configuration of nubian vaults and domes; woodless, since they are built with no supporting form so whatever. Together they have built small and large structures on both sides of the Rio Grande, in Presidio County and in Chihuahua State. Jesusita has conducted the Adobe Alliance workshops, held in Presidio, where she has taught the construction of adobe walls, keying in corners, the adobe roofing, and plastering with clay, straw, cactus juice and horse manure. She has attended Cornerstones workshops in New Mexico but is teaching in Santa Fe for the first time on October 8th.



The purpose of the Adobe Alliance is to build low-cost energy efficient housing that is climatically and environmentally compatible and to fill wide-spread needs for sustainable, salubrious housing while enhancing the unique landscape of the Big Bend region of West Texas and other desert environments. www.adobealliance.org.

Means to reach this goal include:

- The use of local renewable, recycled resources and building materials to considerably reduce cost and environmental impact, avoiding the use of industrial materials;
- Providing roofs in the configuration of adobe vaults and domes, a unique yet ancient design feature which eliminates the use of wood, an increasingly scarce natural resource;
- Designs which harness natural energy for heating and cooling. Adobe walls retain heat in the winter and stay cool in the summer, eliminating the cost of mechanical heating and cooling systems;
- A system to meet local housing needs using indigenous skills, thereby providing a source of employment and simultaneously incorporating, preserving and enhancing local architectural heritage.
- An appropriate building technique for chemically sensitive individuals, using only materials that are totally non-toxic.

Remember to register by the deadline - 1 week before each class or workshop starts!

Renewable Energy

Introduction to Solar Design and Techniques

Colin Mitchell, Mark Chalom, Windy Dankoff, Bristol Stickney, Charles Bensinger, Ben Luce, Mark Sardella, Allan Sindelar, Alfred von Bachmayr
Thurs. Sept. 23rd - Nov. 18th, 6:30pm- 9pm, \$210
Registration Deadline: Sept. 16th

A group of Santa Fe's finest solar designers and technicians come together to present an overview of proven renewable energy options. Homeowners, business owners and energy enthusiasts will learn about solar-electric power for off-grid living, grid-tied applications and water pumping, passive solar architecture, biofuels, and solar water heating, as well as power distribution, electrical utility and political issues. Instructors will present both theory and application. Come learn what latest energy technologies fit into your lifestyle, budget, and designs for the future.

Allan Sindelar is founder of Positive Energy of Santa Fe. He is a licensed commercial (EE-98) Electrical Contractor, a Xantrex Trace Certified Dealer, a Sunnyboy Certified Installer, and the only working North American Board of Certified Energy Practitioners (NABCEP) Certified Solar PV Installer in New Mexico. allan@positiveenergysolar.com

Charles Bensinger is a renewable energy consultant, educator, researcher and writer. As Executive Director of Renewable Energy Partners of NM, Charles is working to bring biofuels infrastructure and biofuels production capacity to Northern NM. newworld@timewindow.com

Ben Luce, Ph.D., began his work in renewable energy technology as a volunteer with the New Mexico Solar Energy Association (NMSEA) in 1997, where he became president in 1999. He is also a Co-Chair of the Coalition for Clean Affordable Energy (CCAEE). lucien@cybermesa.com

Bristol Stickney, BS in Mechanical Engineering, University of Maine at Orono, has been involved with solar heating systems as a designer, installer, repairman and user continuously since 1976. He worked with New Mexico Solar Energy Association over 17 year period as Staff Engineer, Director of Research, Associate Director, Treasurer and Vice Chairman of the Board. bristol@cybermesa.com

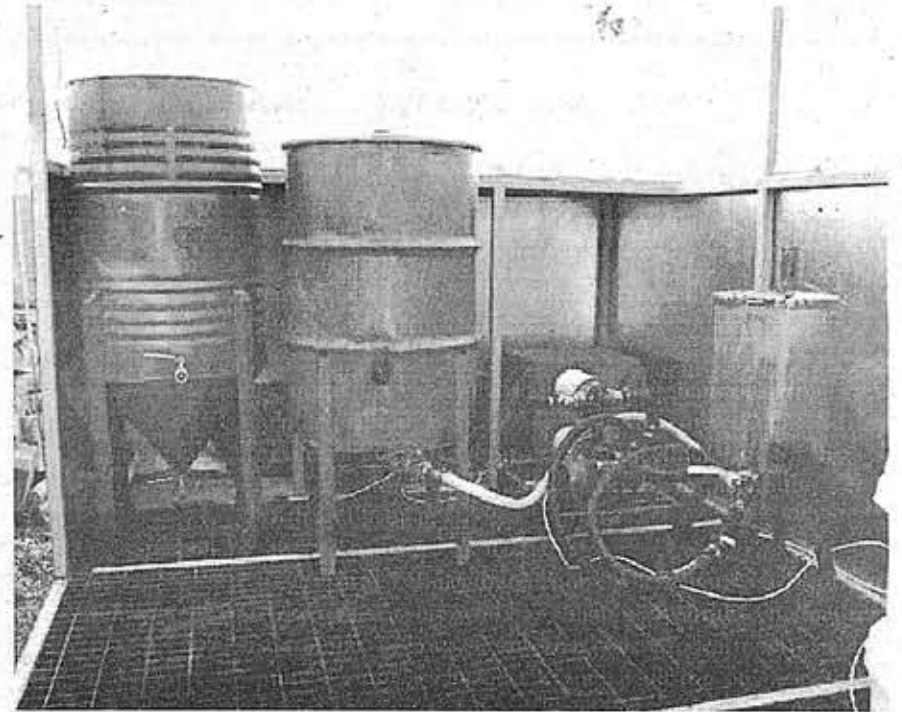
Mark Sardella, BS in Mechanical Engineering, Virginia Polytechnic Institute, designed spacecraft instruments under NASA contracts before joining the energy industry in 1993. Since then he has designed and installed numerous onsite renewable power systems, and is currently the Executive Director of Local Energy. msardella@localenergy.org

Windy Dankoff is a pioneer in wind and solar-electric power and solar pumping. His company in Santa Fe, started in 1977, now has international clientele. He concentrates now on writing and education, including articles for Home Power Magazine and teaching at Solar Energy International. windy@dankoffsolar.com

Mark Chalom, Architect, has specialized in blending Passive Climatic Design with Traditional and Contemporary Adobe styles. His company, Solar Design & Analysis, is a full service Architectural firm that has been on the cutting edge of passive solar design techniques for 25 years. solarch@rt66.com

Colin Mitchell began his Sun worship with a summer's worth of classes from Solar Energy International, followed by a one year certificate degree from San Juan College in "Photovoltaic System Design & Installation". colin@dankoffsolar.com

Alfred von Bachmayr is a Registered Architect with a B. Arch from the U. of Colorado. His practice includes green and non-toxic building materials, smaller, more efficient designs and renewable energy resources. Currently his work includes low cost housing projects on both sides of the border with Mexico, and in Native American communities. vonbachmayr@earthlink.net



Hands-On Photovoltaic System Installation

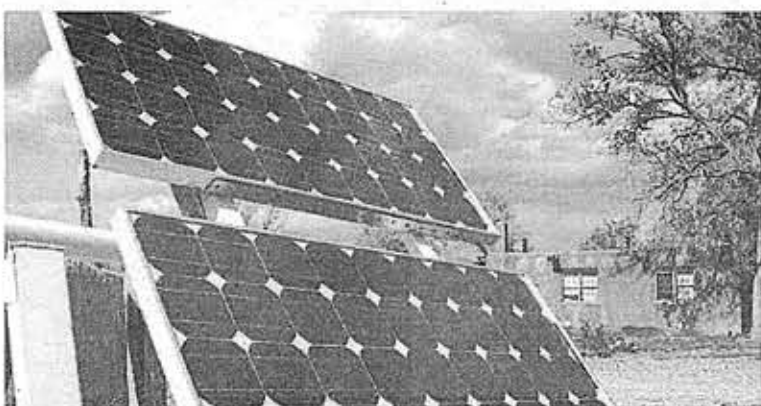
Adi Pieper

Sat. Oct. 30th & 31st, 9am- 3pm, \$140

Registration Deadline: Oct. 23rd

This two day workshop will introduce the practical side of solar electrical energy by designing, assembling and installing a small photovoltaic system. The first day will be dedicated to basic electrical theory, wiring techniques, site survey, and system design. On the second day the actual system will be assembled and installed. Participants will be actively involved in every step from the design to the final installation. Since the first day will cover the basics, no prior knowledge or skill is required. If you do have previous knowledge and/or skill, this may answer many questions other classes and books do not cover.

Adi Pieper is the author of two successful books on Solar Energy: The Easy Guide to Solar Electric, Part 1 (for Home Power Systems), and The Easy Guide to Solar Electric, Part 2: Installation Manual. He has worked in the solar energy field since 1991, and has taught classes on Solar at the Santa Fe Community College. Adi has been an electrical contractor since 1993, and has designed and installed photovoltaic systems, stand alone and grid intertied, all over New Mexico.



Sun	Mon	Tue	Wed	Thurs	Fri	Sat
Sept 5	6	7	8 Adobe 8:30a-3:30p	9	10 Adobe 8:30a-3:30p	11 Peace Corps 4-6:30p Labyrinth 9a-4p
12	13 Adobe 8:30a-3:30p	14	15 Adobe 8:30a-3:30p Herbs Fall 6-8:30p	16 Helmut Ziehe 9a-5p	17 Helmut Ziehe 9a-5p Adobe 8:30a-3:30p	18 Helmut Ziehe 9a-5p Drought Gard. 9a-4p
19 Helmut Ziehe 9a-5p	20 Helmut Ziehe 9a-5p Adobe 8:30a-3:30p	21 Helmut Ziehe 9a-5p	22 Adobe 8:30a-3:30p Herbs Fall 6-8:30p	23 Intro Solar 6:30-9p	24 Rain Garden 6-9p Tree of Life 7-8:30p Adobe 8:30a-3:30p	25 Grow Wealth 10a-5p Greenhouse 9a-3p
26 Greenhouse 9a-3p	27 Adobe 8:30a-3:30p	28 Marketing. 6-8p	29 Adobe 8:30a-3:30p Educators. 8:30-3:30 Herbs Fall 6-8:30p	30 Intro Solar 6:30-9p Educators. 8:30-3:30	Oct. 1 Adobe 8:30a-3:30p	2 Pollution 9a-4p
3	4 Adobe 8:30a-3:30p	5 Marketing. 6-8p	6 Adobe 8:30a-3:30p Herbs Fall 6-8:30p	7 Intro Solar 6:30-9p	8 Adobe 8:30a-3:30p Adobe Simone 9-5	9 Adobe Simone 9-5 Grow Wealth 10a-5p Marketing 9a-2p Traffic Surv. 10a-4p Harvest 9a-4p
10 Adobe Simone 9-5	11	12 Marketing. 6-8p Pueb. Pottery 6-8:30p	13 Herbs Fall 6-8:30p	14 Pueb. Pottery 6-8:30p Intro Solar 6:30-9p	15 Vastu 7-8:30p	16 Vastu 9a-4p
17	18	19 Marketing. 6-8p Pueb. Pottery 6-8:30p	20 Herbs Fall 6-8:30p	21 Pueb. Pottery 6-8:30p Intro Solar 6:30-9p	22	23 Pueb. Pottery TBA Harvest 9a-4p
24 Mushrooms 9a-4p	25	26 Marketing. 6-8p Pueb. Pottery 6-8:30p	27 Herbs Fall 6-8:30p	28 Pueb. Pottery 6-8:30p Intro Solar 6:30-9p	29	30 Pueb. Pottery TBA PV Install 9a-5p Harvest 9a-4p
31 PV Install 9a-5p	Nov. 1	Marketing. 6-8p 2	3 Herbs Fall 6-8:30p	4 Intro Solar 6:30-9p	5	6
7	8	9 Marketing. 6-8p	10	11 Intro Solar 6:30-9p	12	13 Harvest 9a-4p
14	15	16	17	18 Intro Solar 6:30-9p	19	20
21	22	Permaculture Design Course August 28 – September 10				

C
A
L
E
N
D
A
R

Registration Form

15

Name:
Address:

Phone Numbers:
Email Address:
Summer 2004

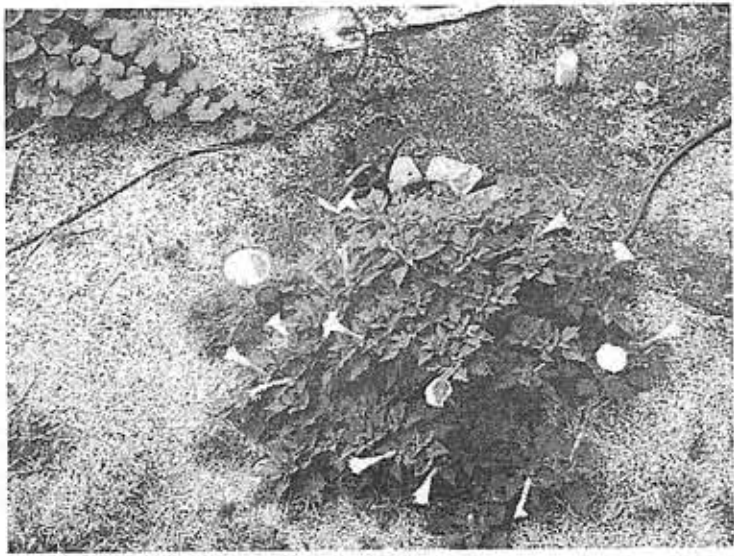
Please fill this box with your information

Ecoersity
SUSTAINABLE LIVING • LAND BASED LEARNING

	Workshop or Course Name	Cost
1		
2		
3		
4		
5		
<input type="checkbox"/>	Check here to receive a brochure for the Certificate for Earth-Based Vocations Program.	Registration Fee : \$10.00
<input type="checkbox"/>	Check here if you would like us to contact you about the Certificate for Earth-Based Vocations Program.	Total :

2004 **Fall** Catalogue

NONPROFIT ORG
US POSTAGE PAID
SANTA FE, NM
PERMIT #402



2639 Agua Fria
Santa Fe, NM 87505
(505) 424-9797
www.ecoversity.org

Ecoversity

SUSTAINABLE LIVING • LAND-BASED LEARNING



2639 Agua Fria
Santa Fe, NM 87505
(505) 424-9797
www.ecoversity.org

EcoVersity Land-Based Learning

Courses at the EcoVersity provide practical ways to learn land skills and sharpen your vision for a sustainable future. EcoVersity continuing education courses are specifically designed for the climate and conditions of Northern New Mexico. EcoVersity's hallmark is hands-on experiential learning leading to real world problem solving. Students trained to expand their observation skills, awareness and appreciation of the natural world. Our faculty is composed of practical visionaries who devote their professional lives to learning from and designing with nature. Our campus on Agua Fria is being designed as a seedbed for the teaching and modeling of a full range of sustainable systems, which participants can then apply to the backyards, farms, communities, and open lands of our Upper Rio Grande Bioregion.

Inside, learn about: Pottery
Vastu Growing Wealth
Bau-Biologie Pueblo Pottery
Gardening ...Adobe!!!
Marketing Wild Herbs of Fall
Installing Solar Permaculture



2004
Fall Catalogue