



# EcoVersity

2639 Agua Fria 505.424.9797  
Santa Fe, NM 87505 [www.ecoversity.org](http://www.ecoversity.org)  
[info@ecoversity.org](mailto:info@ecoversity.org)

## Sustainable Living/Land-Based Learning—Fall 2003

### CONTINUING EDUCATION COURSES AND WORKSHOPS

**Concerned about the earth?** Courses at the EcoVersity provide practical ways to learn land skills and sharpen your vision for a sustainable future.

EcoVersity courses are specifically designed for the climate and conditions of Northern New Mexico. We emphasize hands-on experiential learning leading to real world problem solving. Expanding one's powers of observation, awareness, and appreciation of the natural world is a hallmark of EcoVersity training. Our faculty of practical visionaries have devoted their professional lives to learning and designing from nature. We are eager to welcome you this Fall to the 13-acre EcoVersity campus on Agua Fria, which is being designed as a seedbed for the teaching and modeling of a full range of sustainable systems; systems which participants can then apply to the backyards, farms, communities, and open lands of our Upper Rio Grand Bioregion.



EcoVersity Visionary Founder, Frances Harwood, Ph.D (1941-2003). See page 5 for shared memories and stories.

### WHAT IS SUSTAINABILITY?

**S**ustainability at the EcoVersity flows from the following principles and processes. Natural systems have proved sustainable over the life of the planet, and so provide the best models for human-designed systems. The acid test for a sustainable system is that it promotes well-being down through seven generations. Sustainable systems are open systems; they learn to learn, respond to feedback, and optimize beauty and quality in relationships. Lastly, for the practitioner, sustainability implies a way of life which actively promotes health, well-being, and the joy of creation.

### Inside

\*Pages 2, 3, 4:  
*Courses, Workshops  
and Lectures*

\*Page 5: *A Tribute to  
Dr. Harwood*

\*Page 6: *Earth-  
Based Certificate  
Program*

\*Page 7: *Calendar &  
Mail-in Registration  
Form*

\*Page 8: *Directions  
to EcoVersity & Con-  
tact Information*

### Campus and Curriculum Update

Greetings EcoVersity Community,

After a beautiful spring, a late frost, wet June, and a hot and dry July the monsoons finally came, kind of. The garden, installed and maintained by the Summer Garden Practicum and the Teen Garden is very close to harvesting. The grow dome is overflowing with cucumbers, chilies, tomatoes, and even some figs! The chickens and turkey are happy with their new passive solar, straw bale coop. The solar hot water system is awaiting the construction of the new shower house and many more exciting demonstration projects are soon to come!!

A major clean-up of the campus is well underway. We are very grateful for the enthusiastic, hard work by the community service crew from the United World College, which spread mountains of mulch, sowed native grass and wild-flower seeds (donated by Plants of SW), and installed footpaths throughout the campus. We would especially like to thank Pat McGinn for his generosity and help.

Volunteers and work-study students have also been making the EcoVersity shine. Beginning this fall the EcoVersity is going to start a bi-monthly volunteer day. Dates and time are to be announced, please check the website for more information.

Please come by and visit the once seed bed, now becoming a real demonstration site for sustainable development and earth-based learning.

Sincerely,  
Nathan Houchin  
Land and Operations Director

Dear Friends,

Thank you all for your generous support this summer. We were deeply moved by the kindness of friends and colleagues who came to help Fiz, her family, and the staff during this difficult time. The EcoVersity staff also very much appreciates the hard work, goodwill, and support offered by the community and Fiz's family which enabled us to continue our work this summer. Fiz left a colorful wide web of friendships and connections with people doing good work near and far. We look forward to meeting everyone and to strengthening those connections.

Our fall semester is up and running; spring semester is brewing. Spread the word about the fall courses, workshops and lectures among those who don't know us! Many people who walk through our doors curious about EcoVersity were referred by former students or have heard about us from others. We welcome new faces and we look forward to seeing you on campus.

Thanks again,

Amy Pilling  
Dean

**See Inside  
for the  
Simone  
Swan  
Lecture!**





## Courses

### Herbs of the Fall Season

Tomas Enos and Janet Snowden

Begins on September 23<sup>rd</sup>, Tuesday, 6:00 – 8:00pm (7 weeks)

Tuition: \$175 OFF CAMPUS

New Mexico herbs and flowers will be putting on a magnificent display this fall. We will begin the course with herb walks to study and sustainably collect edible and medicinal plants. Using these materials, we will then cook wild foods and make preparations for personal health, such as foot and face treatments. Emphasis will be placed on learning the uses of barks, roots and seeds. We will be learning botany, using plants from A to Z, agaves and yuccas. We will also be harvesting, processing, cooking, and making herbal preparations. Join us for this seasonal approach to learning and understanding plants. By joining with the seasonal rhythms, we can keep in tune with the biological cycles of our bioregion. This autumn course initiates a year long sequence of courses exploring the world of plants as our ally in maintaining balance and optimal health.

**Tomas Enos**, BA Ohio University, MA Prescott, Ph.D. Union Institute & University, is an ethnobotanist and practicing herbalist. The owner of El Milagro Herbs in Santa Fe, Tomas has grown, wildcrafted, and manufactured herbal products for over 12 years. His doctoral dissertation described curanderas in Oaxaca, and he has extensive contacts with traditional healers in Latin America. He has taught herb classes at IAIA, the Santa Fe Indian School Agroecology program, and has led tours to find herbs and herbalists in Mexico, Costa Rica, and Ecuador. For more information, email Tomas at [elmilagro@cnsf.com](mailto:elmilagro@cnsf.com). **Janet Snowden**, Doctor of Oriental Medicine and herbalist, has grown, wildcrafted, and used native plants throughout the Southwest. As a nature photographer she has shown her herb photos in local galleries. Her teaching experience includes leading herb classes at the International Institute of Chinese Medicine and the New Mexico Academy of Healing Arts. Janet also owned a 30 acre herb farm for 15 years in Texas. For more information, email Janet at [snowflower@cybermesa.com](mailto:snowflower@cybermesa.com).

### Enlivening the Capacities of the Human Being

Marcia Barton

Beginning September 18<sup>th</sup>, Thursdays, 7:00 – 9:00pm (6 weeks)

Tuition: \$60, Individual Lecture Cost: \$12

The first of three courses designed to become acquainted with anthroposophy and how it can become a useful tool for understanding the human being in relationship to ourselves and each other, to nature and the environment, to the social issues of our times and to the spiritual world. Topics will include: The Idea of Anthroposophy, An Holistic View of the Human Being I, An Holistic View of the Human Being II, The Phases of Life, Our Relationship to Nature, and The Journey Between Death and a New Birth. Further courses will include: *The Spiritual Hierarchies, Karma and Reincarnation, The Evolution of the Human Being, Earth, The Cultural Epochs, Self Knowledge, The Nature of Evil, and Social Issues.* F3-17

**Marcia Barton** has been a student of Anthroposophy for over 20 years and currently teaches Horticulture at Santa Fe High School. **Micky Leach** also has been a student of Anthroposophy for over 20 years and currently maintains a private rhythmic massage practice that has its basis in Anthroposophy. **Eduardo Yi**, a native of Peru, has also studied Anthroposophy for over 20 years, and currently teaches Spanish at the Santa Fe Waldorf High School. [mbartonst@aol.com](mailto:mbartonst@aol.com)

### Nature of Myth

Douglas Belknap

Beginning September 23<sup>rd</sup>, Tuesdays, 6:30 – 9pm (8 weeks)

Tuition: \$185

As humans our environment is literal and imaginal simultaneously. As a culture we are largely oblivious to both aspects. Our lost awareness of the imaginal or mythic dimension of experience has resulted in the anthropocentrism at the root of our current ecological crisis. The task of this class will be to explore the ways this awareness can be regained—in a contemporary form and context. This course will foster and contribute to a COMPREHENSIVE environmental awareness by restoring a concern for "the nature of myth". F3-04

**Douglas Belknap M.Ed.**, is an imaginal psychologist in private practice. He is a former Fellow of the Dallas Institute of Humanities and Culture where he worked with James Hillman and others developing the field of Archetypal Psychology. He has taught at the University of New Mexico, for the Antioch University Graduate School and for Jungian organizations across the country. [sopocibelknap@msn.com](mailto:sopocibelknap@msn.com)

### Establishing Gardens in the Schools

Priscilla Logan

Beginning September 24<sup>th</sup>, Wednesdays, 9:00 – 11:30pm (8 weeks)

Tuition: \$185

Let's grow children in school gardens. Sound interesting? You don't need to be a gardener or a teacher to learn how to do this. In this class you (parents and volunteers) will receive hands-on experience enabling you to help a classroom teacher take students outside to grow herbs or vegetables in the winter. You will also learn the skills of managing groups of children as well as how to teach students the math, science, and language arts needed to pass state standards. Learn to teach children outdoors with hands on experiences. Together we will all design and create a straw bale cold frame, dig, plant, nurture the plants, and have fun, while teaching counting, computing, drawing, and writing in the school garden. Your classroom will be the outdoor weekly garden activities with Ms. Logan and a class of elementary school students, followed by a discussion of curriculum, teaching techniques and classroom management. F3-06

**Priscilla Logan**, BA Indiana University, MA San Diego State, MA San Jose State, is well known in New Mexico as a pioneer in outdoor classrooms. Priscilla has developed "Math and Science in the Outdoor Classroom" for Highlands University; given outdoor classroom workshops for teachers and parents; as well as taught environmental educators in government and private organizations. She is a Permaculture Instructor as well as a graduate of the John Jeavons' Biointensive Garden Teacher Practicum. She has received the New Mexico Outstanding Environmental Educator of the Year Award. She also brings to the course the experience of her 25 years of public school teaching. [plogan@outdoorclassroom.org](mailto:plogan@outdoorclassroom.org)

### Qi Gong

Mark Turner

Beginning September 25<sup>th</sup>, Thursdays, 9:00 – 10:30am (8 weeks)

Tuition: \$100

Qi is energy. 'Gong' is practice: thus Qigong is a practice of cultivating energy. Students will learn the 5 sequences of Soaring Crane Qigong, founded in China in 1979, as well as its place in Chinese Medicine. Of the two applications of Qigong: martial arts and health maintenance, China Soaring Crane belongs to the latter category. Focusing mind and breath through physical movement, this practice improves the flow of "qi" by opening the meridians (internal energy pathways) and clearing blockages. The practice promotes physical and mental health leading to a greater sense of harmony with the environment. Wear loose, comfortable clothing. F3-08

**Mark Turner** began practicing Zhan Zhuang Qigong and Ba Duan Jin in London with Master Lam Kam Chuen and in Paris where he was introduced to Soaring Crane Qigong. Mark continued training in Southeast Asia under Shifu Gouw Tjehing Goh, the respected teacher of China Soaring Crane Qigong. He further developed his practice by studying remedy routines, stepping crane, standing meditation/zifa gong (spontaneous movement), and the use of healing sounds. Mark was awarded his teaching certificate in Soaring Crane Qigong by Master Gouw Tjehing Goh in Seremban, Malaysia. He has also studied Seiki and Katsugen, forms of bodywork using spontaneous movement, with Akinobu Kishi, a longtime student of Shizuto Masunaga, founder of Zen Shiatsu. He continues to study with Gouw Tjehing Goh. [shiatsu@seiki@yahoo.com](mailto:shiatsu@seiki@yahoo.com)

### Introduction to Solar Design and Techniques

Renewable Energy Faculty

Beginning September 25<sup>th</sup>, Thursdays, 6:00 – 8:30pm (8 weeks)

Tuition: \$185

A group of Santa Fe's finest solar designers and technicians come together to explain both passive and active solar technologies and design. Homeowners, business owners and energy enthusiasts will learn about solar-electric power for off-grid living, solar-electric power in grid-intertied applications, solar water pumping, passive solar architecture, solar water and space heating, as well as power distribution, electrical utility and political issues. Instructors will present overviews with both application and theory. Come learn what latest solar technologies fit into your lifestyle, budget and designs for the future. F3-09

### Team taught by Santa Fe's illustrious Solar Bozos, including:

**Bristol Stickney**, BS in Mechanical Engineering, University of Maine at Orono, and has been involved with solar heating systems as a designer, installer, repairman and user continuously since 1976. He worked with New Mexico Solar Energy Association over 17 year period as Staff Engineer, Director of Research, Associate Director, Treasurer and Vice Chairman of the Board. He Was Chief Engineer of Coyne Solar Manufacturing Company for 5 years, where he designed and oversaw assembly of around 600 batch solar water heaters in the region (many are still in use – one is visible from EcoVersity.) Bristol worked as a Research associate with Amory Lovins at the E-source office of the Rocky Mountain Institute. He presently lives near Santa Fe and works as an independent designer and energy efficiency consultant on passive solar building design and high efficiency hydronic heating systems. [bristol@cybermesa.com](mailto:bristol@cybermesa.com)

**Allan Sindelar** holds an associate's degree in construction technology from Linn-Benton Community College in Albany, Oregon (1979) and a bachelor's degree in environmental studies from John F. Kennedy University in Orinda, California (1992). He has worked with Amory and Hunter Lovins' at the Rocky Mountain Institute in the mid-eighties, and installed his first PV system while living at Lama Foundation, an ecumenical spiritual community in northern New Mexico, in 1988-89. He has taught at EcoVersity in Santa Fe and Solar Energy International in Carbondale, Colorado, and installed PV systems for several contractors in western Colorado before starting Positive Energy in 1997. He and his wife Johanna are home-schooling a daughter, Emma Rose, and two sons, Nathaniel and Solomon. Allan is on the North American Board of Certified Energy Practitioners and the Advisory Board of the New Mexico Solar Energy Association.

**Mark Chalom**, Architect, specializes in Traditional and Contemporary Adobe styles. His company, Solar Design & Analysis, is a full service architectural firm that has been on the cutting edge of passive solar design techniques for many years. Mark's experience spans over twenty-five years in the design and construction of environmentally appropriate homes. His work has been published in various books and national magazines. [solarch@rt66.com](mailto:solarch@rt66.com)

### Singing the Greening

Nelson Denman, with guest artists Jim Terr and Consuelo Luz

Beginning September 25<sup>th</sup>, Thursdays, 6:00 – 8:30pm (8 weeks)

Tuition: \$185

In eight weeks of EcoMusical Celebration, participants will jointly tap their creativity in music, story and song. Each evening will focus on a specific environmental topic and conclude with a joyous sharing. All ages are welcome, and participants are encouraged to bring their instruments. Participants will perform for friends and family on the final evening session. F3-10

**Nelson Denman**, MA, has taught ecological design, permaculture, and deep ecology in colleges, communities, and schools in the United States, Mexico, South America and Europe. He was the founding editor of the Green Pages of the Santa Fe Reporter. Nelson also is an EcoTroubadour, teaching ecology through music and storytelling throughout the United States and Europe. Nelson performed at the First International Healthy Cities Conference in San Francisco and was a featured speaker at the inaugural Greening of the Campus Conference. He is a graduate of St. John's College and Harvard University School of Education. [nelsondenman@hotmail.com](mailto:nelsondenman@hotmail.com)

**With Guest Artists Jim Terr**, a humorous song writer, of whom Bill Hutchison with the Santa Fe Reporter writes, "Some of the most thoroughly enjoyable tunes I've ever heard...tiny monuments to songwriting...For whatever elements came together to make the genius of Jim Terr and his music happen, we should be truly gleeful, grateful and gratified. 'Demos and Diamonds' is a square meal of music, a walk around town when all the lights are out and your first kiss, all over again." [www.bluecanyonproductions.com](http://www.bluecanyonproductions.com)

**Consuelo Luz**, Santa Fe singer/songwriter/activist Consuelo Luz was raised in Greece, the Philippines, Spain, Italy and Peru by Chilean/Cuban parents. She arrived in Taos, New Mexico, in 1973, in her 1948 Wonderbread truck with a pencil stuck in the carburetor. She learned to make adobes, go for firewood, fish, hunt, became a tinsmith, sang in churches and cantinas, grew corn, tomatoes, squash and fields of static, preserved apricots and ended up representing Hispanic media on a panel with Sam Donaldson, Arianna Huffington and other media notables at Colin Powell's 1997 Presidential Summit on America's Future. Consuelo hosted and produced a daily nationally syndicated Spanish alternative radio show for fifteen years, wrote a syndicated Spanish column, produced three albums of her original songs and a CD of Sephardic World Music, has published poetry, fiction, performed internationally and as an Artist-in-Residence in New Mexico Schools created original bilingual musical theater with hundreds of students. [www.consueloluz.com](http://www.consueloluz.com)

### Ecological Design

Nelson Denman, with guest speakers David Abram and Kathryn Bennett

Beginning September 23<sup>rd</sup>, Tuesdays, 6:00 – 8:30pm (8 weeks)

Tuition: \$185

Good Ecological Design changes the way we see ourselves, the land and one another. Sustainable futures depend upon designing from nature. Come learn about the principles of biomimicry, permaculture and bioregionalism as we explore such topics as environmental economics, deep ecology, environmental justice, cultural ecology, and pattern recognition. Experiential projects will complement class discussions and lectures. F3-05

**Nelson Denman**, see above for BIO [nelsondenman@hotmail.com](mailto:nelsondenman@hotmail.com)

### With Guest Lecturers:

**David Abram**, Ph.D. is the award-winning author of the *Spell of the Sensuous: Perception and Language in a More-than-Human World*. He is an ecologist, anthropologist, and philosopher and has lived with indigenous sorcerers in Indonesia, Nepal, and the Americas. David lectures and teaches widely on several continents; he has been named by the Utne Reader as one of a hundred visionaries currently transforming the world.

**Kathryn Bennett**, Doctor of Naturopathy, is a native New Mexican who has worked in the natural foods and gift industry nationwide for over two decades. In 1977 she started Soyfoods in Santa Fe and with ten others, founded the Soy Foods Association, an international organization. In 1980, she founded Col. Sanchez Foods which uses organically grown corn, non-irradiated herbs, environmentally friendly packaging, and supports environmental causes with a percentage of the profits. Kathryn is also a writer. She attended the 1995 International Women's Conference in Beijing as a reporter for Pacifica Radio. She writes, consults and is a spokesperson for sustainability and organically grown foods. [redfeather@cybermesa.com](mailto:redfeather@cybermesa.com)

### Restoring Santa Fe's Watershed Through Backyard Landscaping & Design

Ben Haggard

Beginning Sept 30, T, 6:30-9pm (4 weeks) AND Sa, Oct 18<sup>th</sup>, 1-5pm

Tuition: \$145 OFF-CAMPUS

Happily for Santa Fe residents, creating attractive, ecologically diverse, healthy, and water conserving gardens and landscapes is a good way to help restore the Santa Fe watershed. Come learn about design approaches and gardening methods that are fun, interesting, rewarding, and cost effective, with the added bonus of making us better eco-citizens. The course will take place in the home of the instructor, and will offer opportunities to see ideas being actively implemented and developed. Course time will be divided between practical applications and the theory behind their appropriate use. Four evening sessions will be complemented by an afternoon session in the garden. No prior experience is required. (See website for directions to site and homework assignment!) F3-30

**Ben Haggard** has been a permaculture author, educator, and designer for over 16 years. Originally trained by permaculture pioneers Bill Mollison, Scott Pittman, and Max Lindegger, Ben was responsible for the ground breaking design of Sol y Sombra, the former Georgia O'Keeffe estate on the edge of Santa Fe. Ben is a principal and a founding member of Regenes Group, an ecological design collaborative. He is a lifelong resident of Santa Fe and a graduate of St. John's College. Along with other members of Regenes, he is currently working on a book about Regenerative Design. [benhaggard@earthlink.net](mailto:benhaggard@earthlink.net)





## EcoVersity 2003 Fall Continuing Education

### Workshops / Lectures

#### Natural Dyeing with Local Plants

Liesel Orend

September 20<sup>th</sup> & 21<sup>st</sup>, Saturday and Sunday, 9:00 – 6:00pm

Tuition: \$175

Explore the wide range of color available to you through plants you can gather in Northern New Mexico! We will go on a short excursion to gather local plants such as chamisa, cota, sage, cedar bark, mullein, and cocklebur. Then, we will use these plants to dye wool and cotton yarns. This class will cover basic natural dyeing procedures, including very low toxicity mordanting, dye bath preparation, and record keeping. We will also discuss plants you can grow for natural dyeing, such as Hopi dye, sunflowers, coreopsis, and indigo. Students will receive yarn samples to keep. **F3-01**  
**Liesel Orend**, BFA, studied weaving and natural dyeing at Northern New Mexico Community College in El Rito, NM. In the past year, her naturally dyed tapestries have captured first place awards at the Taos Wool Festival and the Albuquerque Fiber Arts Fiesta. She gathers and grows many of the dye materials for her weaving, and makes her naturally dyed yarn available for sale as well. Liesel is passionate about natural dyes. [lieselo@newmexico.com](mailto:lieselo@newmexico.com)

#### Drought Gardening

Priscilla Logan

September 20<sup>th</sup>, Saturday, 9:00 – 4:00pm

Tuition: \$65

In this comprehensive one-day organic gardening workshop we will cover techniques for successful fall and winter planting in drought-stricken northern New Mexico. Emphasis will be placed on low water gardening through alternative methods in wind breaks, water collection, watering, soil preparation and additives, intensive plant placement, seed propagation and mulching. The course will include hands-on and demonstration learning. Bring your own gloves, hat, lunch, and work shoes. **F3-02**

**Priscilla Logan**, BA Indiana University, MA San Diego State, MA San Jose State, is well known in New Mexico as a pioneer in outdoor classrooms. Priscilla has developed "Math and Science in the Outdoor Classroom" for Highlands University; given outdoor classroom workshops for teachers and parents; as well as taught environmental educators in government and private organizations. She is a Permaculture Instructor as well as a graduate of the John Jeavon's Biointensive Garden Teacher Practicum. She has received the New Mexico Outstanding Environmental Educator of the Year Award. She also brings to the course the experience of her 25 years of public school teaching. [plogan@outdoorclassroom.org](mailto:plogan@outdoorclassroom.org)

#### Environmental Educator's Outdoor Experience

Priscilla Logan

September 22<sup>nd</sup> and 23<sup>rd</sup>, Monday and Tuesday, 9:00 – 3:00pm

Tuition: \$140

This course is for adults interested in developing skills for introducing children to the wonders of nature, e.g. people in government and private environmental organizations, parents, teachers, etc. This is a hands-on course with children (ages K-12) taking classes out into the natural world to increase learning and appreciation of nature. The outdoor activities will include a variety of topics such as exploring insect and bird habitats, soil composition, and gardening. Each outdoor class will be followed by a discussion of curriculum, teaching techniques and classroom management. (Bring lunch and outdoor clothes.) **F3-03**

**Priscilla Logan**, see above for BIO [plogan@outdoorclassroom.org](mailto:plogan@outdoorclassroom.org)

### Lecture by Simone Swan

Tuesday, September 23<sup>rd</sup>, 7-8:30pm

#### FROM THE NILE TO THE RIO GRANDE...

tells of the creation of the research and development center in low-cost adobe brick construction on the Tex-Mex border. The Adobe Alliance has built houses and pavilions for families on both sides of the Rio Grande. The engineering technique and craftsmanship of fashioning domes and vaults is taught for purposes of economy since they are the least expensive roofs to build in adobe country. Simone Swan apprenticed with the late architect Hassan Fathy in Cairo on the Nile.

An adobe workshop will be held at the Adobe Alliance October 31 - November 2, 2003. [www.adobealliance.org](http://www.adobealliance.org).

**Simone Swan**

Simmy Withers grew at age 3 into an obsessive sketcher of floor plans and was seized with a passion for urban planning when playing with toy cars in the sand. Born American she was educated in French and English in schools of the US, France and central Africa. After motherhood of two, Simone Withers Swan forged a career in art book publishing then founded a public information agency, Withers Swan in Manhattan. Clients numbered universities, art museums, marginal filmmakers, with probono work for budding environmental organizations. She served as founding director of the Menil Foundation in Houston and New York, running programs in art, film, energy conservation and alternative energy, while sharing responsibility in the creation and administration of the international activities of the ecumenical Rothko Chapel in Houston.

In 1977 on reading Hassan Fathy's "Construire avec le peuple," (building with the people but at U of Chicago Press altered to *Architecture For The Poor*) she left to study architecture with the great master in Cairo, then architectural history at Yale with Sculley. As tourist from New York she discovered the Big Bend region of Texas and settled there arbitrarily in 1994 to build low cost housing a la Hassan Fathy and to teach adobe building and adobe roofing. The Adobe Alliance grew out of this experience and here workshops are held in adobe building from the foundation to the vaulted or domed roofs, to be plastered with a sturdy, really impermeable mix of clayey earth, straw, prickly pear juice and horse manure. She and her catahoula hound Hassan Fatima live and work from October to May on a mesa overlooking the Rio Grande, encircled by tiers of blue high sierras, the Big Bend peaks to the east, the Chinati range to the north. [simone@adobealliance.org](mailto:simone@adobealliance.org).

#### Traditions in Indigenous Agriculture

Clayton Brascoupe

September 24<sup>th</sup> and 26<sup>th</sup>, Wednesday and Thursday, 6:30 – 9:00pm; September 27<sup>th</sup>, Saturday, 9:00 – 1:00pm

Tuition: \$75

This course will explain many approaches to "traditional agriculture" by using historical and contemporary examples from many indigenous peoples of the Americas. Topics will include seed selection, soil fertility, weather patterns, family roles and responsibilities, and ancient and contemporary garden design. This course will be helpful to those who wish to learn a different way of looking at the human relationship to the earth through "farming". The course will be two evenings of discussion and one day of hands-on making garden space. **F3-18**

**Clayton Brascoupe**, Mohawk/Algonquin, has years of experience in both conventional agriculture and "traditional agriculture". He started working on large gardens as a young boy and has worked on a variety of farms since age 13. His experience with traditional farming has been over 30 years working on many family farms and with his own family farm in Tesuque Pueblo. Clayton is the Program Director of the Traditional Native American Farmer's Association since 1994 and has taught Traditional Agriculture and Permaculture for over 10 years. (505) 983-2172.

#### Horno Building Workshop

Kathryn Bennett

Session 1: Sept. 27<sup>th</sup> & 28<sup>th</sup>, Sa & Su, 10-4pm OR Session 2: Oct 11<sup>th</sup> & 12<sup>th</sup>, Sa & Su, 10-4pm  
Tuition: \$140 OFF CAMPUS

Hornos, made of earth, rock, clay, sand, water and straw are simple ovens which create the finest breads and baked goods incorporating all the elements: earth, air, fire and water. We will build an outdoor, low-cost, wood-fired mud oven. We will also plaster an almost completed one. Learn the basic construction techniques, and learn to plaster and sculpt with adobe. Enjoy this workshop in an exquisite country setting on the Santa Cruz River in the sacred village of Chimayo, New Mexico. Wear old clothes. Bring mud shoes, water and sun protection including a hat and sunscreen. Space is limited. Register early to reserve a place. Cost of workshop includes an earth oven manual. Register for either Session 1 or Session 2. **F3-11, F3-31**

**Kathryn Bennett**, see BIO in Courses. [redfeather@cybermesa.com](mailto:redfeather@cybermesa.com)

#### LECTURE - Water Systems for Natural Building

Art Ludwig

Thursday, October 2<sup>nd</sup>, 5:30 – 6:30pm

Tuition: \$6 (free with registration for Greywater workshop)

Ecological Systems Designer Art Ludwig presents information on water systems for natural building. He will discuss how natural water systems work, what nature has to teach us about water system design and water supply systems for natural building, including rainwater. He will also touch on efficient use, including the radical redesign of fixtures and cascading water through multiple uses, and systems for beneficial reuse of water and nutrients in wastewater, including greywater, and blackwater systems. Call to reserve your space! **F3-23**

Ecological Systems Designer and Greywater Guru **Art Ludwig** has probably paid more attention to Greywater systems the past fourteen years than anyone else on the planet. He's written three books and numerous articles on Greywater systems, developed several new system designs, and consulted with New York and New Mexico on their Greywater laws. He's also worked on water and wastewater systems in twenty-two countries around the world. See also: [www.oasisdesigns.net](http://www.oasisdesigns.net)

#### Greywater Systems Design and Construction

Art Ludwig

Friday, 5:30 – 6:30pm October 3<sup>rd</sup>; Saturday, 1:30 – 5:00pm October 4<sup>th</sup> and Sunday, 9:00 – 5:00pm October 5<sup>th</sup>.

Tuition: \$140

Reusing washwater in the landscape provides superior treatment, saves water, and saves money. With recent legal changes that allow Greywater systems to be installed without a permit, New Mexico is in the forefront of the Greywater revolution. Learn to reuse this valuable resource properly and effectively, abiding by New Mexico regulations. Greywater guru Art Ludwig, founder of Oasis Designs and inventor of Oasis Biocompatible Detergent, presents a three-day workshop on design and construction of Greywater systems. The workshop is oriented towards building and landscaping professionals, and owner builders. Suggested reading list is available at [www.oasisdesign.net/greywater/workshop/](http://www.oasisdesign.net/greywater/workshop/). Register early to reserve your space! **F3-16** Art Ludwig, see BIO above

**EDUCATIONAL COLLABORATION between EcoVersity and Earthworks Institute in Galisteo**  
EcoVersity and Earthworks Institute are collaborating on a series of restoration and land stewardship workshops. Register for the Windbreak Workshop and the Water Harvesting & Erosion Control Workshop as a package for a 15% discount. Look for more workshops and workshop packages in an educational collaboration with Earthworks in EcoVersity's Spring 2004 semester! See [www.earthworksinstitute.org](http://www.earthworksinstitute.org) and [www.ecoversity.org](http://www.ecoversity.org) for more information. REGISTER AT 424-9797 or [www.ecoversity.org](http://www.ecoversity.org)

#### Water Harvesting and Erosion Control

Joel Glanzberg

Saturday, September 27<sup>th</sup>, 10-4pm

Tuition: \$65 OFF-CAMPUS AT EARTHWORKS INSTITUTE (see directions below)

Come to Earthworks Institute to learn about water harvesting and erosion control by seeing and doing. Joel Glanzberg will explain the basic concepts of stemming (reversing?) erosion and slowing and harvesting water in the landscape. We will look at numerous existing structures built over the years at Earthworks including gabions, swales, and check dams to see which ones have performed well over time, which ones need improvement, how they were built and how they are placed in the landscape. In the afternoon we will site, design and build a water harvesting structure at Earthworks. Be prepared to spend the day outside. Sign up for the Water Harvesting Workshop and the Windbreak Workshop as a package to receive a 15% discount. Workshop held at Earthworks Institute. **F3-24**

**Joel Glanzberg**, BA Saint John's College, has studied with John Todd at New Alchemy Institute, Permaculture with Bill Mollison, and is now employed by Regenesis. He co-founded Flowering Tree with Roxanne Swentzell; a permaculture integrated homestead at Santa Clara Pueblo. Joel has taught courses at University of New Mexico, Prescott College, the Desert Botanical Gardens in Chinle, Arizona, and in Peru and Brazil. His many talents include landscape design, blacksmithing, carpentry, and work as an adobero. [joelgl@yahoo.com](mailto:joelgl@yahoo.com)

#### Windbreak Workshop

Jan-Willem Jansens

Saturday, October 4<sup>th</sup>, 10-4pm

Location: OFF-CAMPUS AT EARTHWORKS INSTITUTE (see directions below)

Tuition: \$65

Do you want to learn how to best protect your orchard, home or grassland from the impact of harsh, erosive, drying desert winds? Learn how to design effective windbreaks in our dry climate using locally available water and materials. This workshop is for gardeners, homeowners, farmers, ranchers and permaculture practitioners interested in the intricacies of windbreak design and the integration of windbreaks in the landscape. You will learn about the basic aerodynamics of plants and structures in the landscape, air flow patterns, ecological effects of different shelterbelts, drainage patterns, and more. We will build part of a shelterbelt with coyote-fencing and learn to site a shelterbelt of trees. Sign up for the Windbreak Workshop and the Water Harvesting Workshop as a package to receive a 15% discount. Workshop held at Earthworks Institute. **F3-24**

**Jan-Willem Jansens**, MA, Wageningen Agricultural University, Netherlands, is the Executive Director of Earthworks Institute and Director of Common Ground Community and Landscape Planning, specializing in watershed and forest rehabilitation, inventorying natural resources and establishing community-driven economic development projects. He likes to dance, sing, play the trumpet, and travel the world inspiring cultural exchanges. [jicacp@earthlink.net](mailto:jicacp@earthlink.net)

#### DIRECTIONS TO EWI DEMONSTRATION RANCH

Coming from Santa Fe, go down Highway 14 toward Cerrillos. At about 13 miles from the I-25 intersection you will see a sign for County Road 55-A. Turn LEFT onto CR 55-A (cross cattle guard; to the left there is a wooden panel with a sign for Earth Works Institute), and follow this dirt road for about 4.5 miles until it ends at the gate and driveway of the EWI Ranch. Go through the gate and follow the graveled road to the main campus, and park in the open area on the left. Note that you will have to cross the Galisteo Creek (mostly dry) and Arroyo Chorro (nearly always dry), which are both unimproved low-water crossings. A regular car may do OK, and a high clearance vehicle will always get you there.

For all workshops, please bring sturdy work clothes, sun, wind and rain protective gear, gloves, water, snacks and a lunch bag. If you have a shovel, please feel free to bring it also.

#### Globalization and our Future

Denise Ames

Mondays, October 13<sup>th</sup> and 20<sup>th</sup>, 6:00 – 8:30pm (2 weeks)

Tuition: \$65

Explore the far-reaching issue of globalization and its sweeping impact upon our everyday lives, the environment, and people throughout the world. Using a multifaceted system's thinking approach we will investigate the historical roots of globalization, examine specific global issues, and determine who benefits and who loses in this complex phenomenon. With this greater understanding our group will engage in a thought-provoking dialogue about possible sustainable and equitable paths for our shared human future. **F3-12**

**Dr. Denise R. Ames**, a life-long educator, received her doctorate in world history education at Illinois State University. She has taught history, global issues, and cultural studies for Albuquerque TVI Community College, University of New Mexico, and the College of Santa Fe. She also gives workshops and lectures on global awareness topics, sustainability and consumer issues, and world history education. Author of the book *Global Waves of Change: A Holistic Human Story*, her current interest and research centers on using a interdisciplinary systems approach to better understand the effects of globalization on ourselves, our society, and the environment with the goal of helping to create a sustainable way of life and to enhance American culture and society. [www.global-awareness.net](http://www.global-awareness.net), [deniseames@comcast.net](mailto:deniseames@comcast.net)



## EcoVersity 2003 Fall Calendar

### Natural Building Primer and Tour

Alfred Von Bachmayr

Mondays, October 13<sup>th</sup> and 20<sup>th</sup>, 6:30 – 9:00pm (2 weeks) AND Saturday, October 25<sup>th</sup>, 10:00 – 4:00pm

Tuition: \$65

Are you thinking of building or remodeling a house in Northern New Mexico and/or want to learn about natural building? This practical workshop will introduce novice designers and builders to sustainable design, building practices, materials, and processes. The course will include discussion on: site assessment, site planning, building programming and design, selection of building materials and methods and the use of renewable energy sources. Aspects of the design/build process will be touched upon from the foundation to the roof including passive solar heating and cooling, straw-bale, light clay, adobe and pumicecrete wall materials, low toxicity construction techniques and water conservation. Students will tour various local naturally built houses and structures, and discuss the virtues and limitations of various natural building techniques. **F3-21**

Alfred Von Bachmayr, is a Registered Architect with a B.Arch from the U. of Colorado. He spent his childhood on a farm in Colorado where using available resources was a way of life. His fascination with building and artistic form led him to a career in architecture based on sustainability, passive solar design and energy efficiency. His dormitory design for the Fountain Valley School in Colorado won a national scholar design award. Becoming more aware of the ecological impact of building, he expanded his practice to include green and non-toxic building materials, smaller, more efficient designs and renewable energy resources. Currently his work includes low cost housing projects on both sides of the border with Mexico, and in Native American communities. [vonbachmayr@earthlink.net](mailto:vonbachmayr@earthlink.net)

### Constructed Ecosystems - Greenhouse Workshop

Arina M. Pittman

November 1<sup>st</sup> and 2<sup>nd</sup>, Saturday and Sunday, 10:00 – 3:00pm

Tuition: \$110

Join us in the EcoVersity Biodome to learn how to create a healthy and productive greenhouse ecosystem, including plants in beds, on the ground and in the pond. Arina Pittman, permaculture teacher and designer, will explain and demonstrate the concepts of plant guilds, the role of beneficial insects and aquaculture, and soil and pest management both in a classroom setting and in action in the Biodome. We will explore placement of the greenhouse on the landscape with the relationship to other structures (buildings, water catchment, compost, etc, and the organization of the interior space for multiple functions (productivity, living space, biodiversity, etc). Arina will share her knowledge, observations, recommended literature and perhaps some great plants. Each participant will learn to create beneficial plant combinations to support health and productivity of the entire ecosystem. The culmination of the workshop will be a design plan for the existing greenhouse, and the construction of a multifunctional grow area for subtropical, temperate and aquatic plants. **F3-19**

Arina M. Pittman, M.L.A. in Landscape Architecture, UNM. Arina has co-founded and established a permaculture/natural building homestead in Jacona at Casa Las Barrancas Farm. Arina's focus is in high desert gardening, productive home system designs and water harvesting. She just received the 2003 Outstanding Environmental Design Award from UNM School of Architecture and Planning. [pci@permaculture-inst.org](mailto:pci@permaculture-inst.org)

### LECTURE Whole Life Foundation Presents: Menopause: Meltdown or Manageable?

Carole Tashel

Tuesday, October 14<sup>th</sup> from 7:00 – 8:00pm

Whole Life Clinic, 2725 Agua Fria (next to EcoVersity)

FREE introductory talk. How and why do herbs actually work? How are they different from hormones? What foods should be in every midlife woman's diet? Learn how to begin your friendship with these powerful allies. (Sign up early; limited to 12 participants due to space restrictions).

Call Whole Life Clinic to register: 982-3936. **F3-13**

Carole Tashel works with wild and cultivated plants as a clinical herbalist, teacher, writer and gardener. She trained with Michael Moore at the Institute of Traditional Medicine and was a consultant for eight years at Herbs, Etc., Santa Fe's outstanding retail herb store. Carole has taught at the New Mexico Academy of Healing Arts, Santa Fe Community College, and privately. She is author of *Gardening the Southwest: How to care for your land while growing food, medicine and beauty* (1999). Her love of plants began in 1979, when she was moved by the beauty, simplicity, effectiveness and potentially revolutionary aspects of natural healing. [ctashel@cybermesa.com](mailto:ctashel@cybermesa.com)

### Menopause Medicine: Herbs & Foods for the Journey

Carole Tashel

Beginning October 14<sup>th</sup>, Thursdays, 6:30 – 9:00pm (4 weeks)

Tuition: \$110

As female Baby Boomers enter menopause, their preference is for natural, safe ways to make the journey. Nourishing herbs and smart dietary choices can be just the support needed. With recent news of the dangers of synthetic hormones, natural options are a necessity and work perfectly well for many women. Hands-on, practical advice on foods and herbs; how to grow your own remedies and make medicines; how to chart symptoms and create personalized formulas. This course is appropriate for younger women who want to assure a smooth ride, women in the midst of the ups and downs of menopause, older women who want to keep hearts healthy and bones strong, and those who wish to discontinue hormone replacement therapy. The class also includes easy-to-understand explanations about your changing physiology, the pros and cons of pharmaceutical and natural hormones, what's right and wrong about soy, as well as the harmful effects of (and remedy for) "xenoestrogens" in our environment. **F3-14**

Carole Tashel See above for BIO [ctashel@cybermesa.com](mailto:ctashel@cybermesa.com)

### Awareness and Wilderness Skills

Robert Bawol

Saturday, October 18<sup>th</sup>, 8:30 – 5:30pm, Rain Date: Saturday, October 26<sup>th</sup> (call ahead: 424-9797 x4#)

Tuition: \$75

This practical, grounded training increases awareness and observation skills, improving connection and flow in any environment, whether wilderness or city jungle. Escalating international tension and security concerns make these skills increasingly important. Learn movement methods to expand awareness quickly, also increasing safety, balance, and chances of seeing wildlife. Understand tracking concepts to empower one's awareness capacities. Practice stalking methods to approach animals and know them far more intimately. Learn animal movement patterns to feel directly how different animals move and experience their perspective. Additional material include Yin/Yang of Environments; Wide Angle-Vision; Energetic Sensitivity from Medical Qigong/Systema; Concentric Rings; Blindfolded Exercises; Bird Language; Sound and Motion; Critical Distance; Ancient Navigation Skills. Bring a notebook, lunch, snacks, and a blindfold! **F3-15**

Robert Bawol, B.A., NMSU, M.A., Monterey Institute of International Studies, M.M.Q., International Institute of Medical Qigong, explores diverse natural, cultural and economic realms, including Alaska, Uzbekistan, and Russia. He has training in sustainable economies, and further developed cross-cultural awareness living in martial-law Poland researching Solidarity. Robert studied rigorous traditional Chinese herbal sciences at RMHI, and apprenticed 3 years, utilizing the herbalism of Michael Moore and David Winston. A state native, he continually stretches his wilderness and awareness skills. He's taken 14 classes at Tom Brown's Tracker School, including Advanced and Expert Awareness. Robert teaches ancient wilderness, awareness, spiritual and plant skills based on gratitude and harmony with the Earth. He is an herbalist and master of medical qigong. [qigongerman@yahoo.com](mailto:qigongerman@yahoo.com)

### LECTURE Green Products

BJ Harris

Friday, October 24<sup>th</sup> from 6:00 – 8:30pm

Tuition: \$6 (free with registration in Green Products: Consumer Guidelines)

Join us for a presentation on the history of green products. B.J. Harris will present where we are today, and the exciting developments of new green products emerging in the marketplace. **F3-28**

BJ Harris is a nationally-recognized expert on environmentally responsible building materials and construction processes. The publisher since 1992 of The Harris Directory, she maintains a database of pollution-preventing building materials; is an advisory board member for Environmental Building Newsletter; and is a columnist for several national environmental magazines. She actively consults and writes on a wide range of sustainability issues. As past president of a Seattle-based architectural firm, she pioneered the first permitted load-bearing strawbale residence in the state of Washington. She also co-founded the Pacific Northwest EcoBuilding Guild; a regional confederation of builders, environmentalists, developers, bankers, and local governments. [bjharris@qgc.org](mailto:bjharris@qgc.org)

### Green Products: Consumer Guidelines

BJ Harris

Beginning October 25<sup>th</sup>, Saturdays, 10:00 – 3:00pm (2 weeks)

Tuition: \$125

When someone tells you something is a green product, what does that really mean? Today we have ecological guides/guidelines for purchasing materials for home, office and garden. These resources assist in helping us to select ecological products although most do not give an extensive representation on the product's impact on the earth. With broader knowledge of the components that go into a product, we have greater opportunity in our buying power to make a difference personally and globally. We will discuss what ecological guides/guidelines are available and how to use them effectively, as well as how to communicate with companies to gain further environmental knowledge and to become a catalyst for greater change. **F3-29**

See above BIO [bjharris@qgc.org](mailto:bjharris@qgc.org)

### LECTURE Greasel for Diesel!

Charlie Anderson and Perry Pillard

October 31<sup>st</sup>, Friday, 7:00 – 8:30pm

Tuition: \$6 (Free with registration for BioDiesel Workshop)

Meet Charlie Anderson and Perry Pillard of Greasel and learn about using waste vegetable oil to run your diesel engine for free! Their conversion method is a kit that uses heated vegetable oil to run your diesel engine with the same fuel economy and power as regular diesel. Registered Bio-diesel workshop participants attend this lecture for free.

Charles Anderson and Perry Pillard, see BIOS and emails below

### BioDiesel, Greasel, and why does my exhaust smell like FRENCH Fries?

Charles Bensinger, Jim Coryat, Perry Pallard and Charlie Anderson

November 1<sup>st</sup> and 2<sup>nd</sup>, Saturday and Sunday, 9:00 – 5:00pm

Tuition: \$185

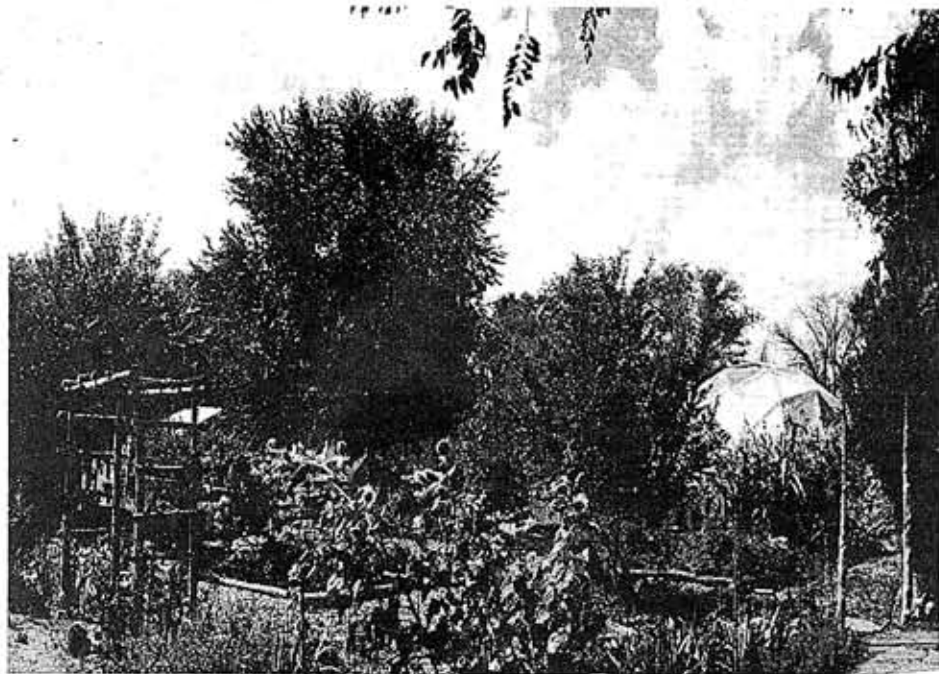
Rudolph Diesel's first engine was designed to run on bio-diesel. His engine (the first engine ever) was designed specifically for folks working the land, who could turn their waste-stream into fuel. This fuel emits no net carbon dioxide, making it an environmentally friendly alternative way to run diesel vehicles. In this workshop, we will learn about a variety of biofuels. The Greasel guys will show us how to convert a car using a Greasel Conversion Kit on a lucky workshop participant's car. We will also learn about making BioDiesel at a local small batch BioDiesel Production Plant. Other topics include: local efforts to bring biofuel stations and production facilities to Northern NM, the larger economic/political issues behind making your own fuel, existing BioDiesel and ethanol users and producers around the world, and BioDiesel's potential from a small scale production to mass production. Workshop participants may enter their diesel car or truck in a screening and lottery for conversion during the workshop. Ask for a form when you register – you pay discounted labor costs & parts. **F3-20**

Charles Bensinger, B.A. St. Lawrence University (English), U. New Mexico Graduate Center (Alternative Fuels & Public Administration), is a renewable energy consultant, video producer, educator, and researcher/writer. As Executive Director of Renewable Energy Partners of NM, Charles is helping to bring biofuels infrastructure and biofuels production to Northern NM. [newworld@timewindow.com](mailto:newworld@timewindow.com)

Jim Coryat Out of frustration with environmental decay Jim became interested in alternative fuels and vehicles in the mid 90's. His perspective is unique in that not only is he well versed on Bio-diesel, alternative fuels and vehicles but is able to apply it to our daily lives in a simple understandable format. Jim is an avid user and producer of Bio-diesel and has built electric cars as well. He is an expert diesel mechanic and currently owns Land Rover Ranch a restoration facility for old series Land Rover trucks located in Las Vegas N.M. [info@landroverranch.com](mailto:info@landroverranch.com)

Charles Anderson grew up in Alaska, where he cut his teeth on diesel engines, long before he dreamed of running them on vegetable oil. Now, living in Drury, MO, he has spent the last 4 years researching and developing plant oil based alternative fuel systems. Thus, Greasel.com was born 2 years ago, and now provides the world with simple conversion kits and accessories to modify a diesel engine to burn vegetable oil. Although he has no formal education when it comes to diesels, each scar on his hands has a lesson and a story. [charlie@greasel.com](mailto:charlie@greasel.com)

Perry Pillard cut his own knuckles on internal combustion engines throughout his adult life, and is an experienced fabricator in addition to proficient computer geek. Perry Pillard discovered eco-friendly, alternative fuels while he worked as a software developer in Dallas, TX in 2000. Extensive research in the area led him to Charles, where a strong friendship started immediately, and because of his skills and abilities, a stout business partnership budded shortly thereafter. Perry is now part owner of Greasel.com, where he and Charles are continually improving and developing alternative fuels technology. [pillard@greasel.com](mailto:pillard@greasel.com)





**I feel very fortunate to have known Fiz; she was an extraordinary role model for me, and will continue to be for the rest of my life. To me, she was a renaissance woman who had an encyclopedic knowledge and a wonderful vision for our beleaguered planet. As we shared many of the same dreams, I was able to learn from her wise counsel and follow the wonderful examples that she sets.**

**I will miss her enormously and will try to help to carry out her dream for a sustainable world. I only wish that our paths had crossed much earlier in our lives.**

I first met Fizz in the dome at Synergia Ranch during a ceremony to help heal the Earth. There she reminded me of my dream of creating biospheric educational programs. She then went on to further provoke myself and colleagues by arranging for us to lecture at EcoV-ersity about our 'Projects on the EcoFrontiers,' causing us to pull together information, images, and to digest and communicate nearly thirty years of project history. Fizz had a way of call people to action, and to share experiences.

She provokes me still, even in her physical absence, to make my dreams come true. She dared to dream. It is no surprise to see the many other people Fizz inspired at EcoVersity carrying on with the mission there .... making her dream a reality, and allowing her spirit to live on.

Deborah Snyder, Global Ecotechnics

**Best wishes for continued success with EcoVersity. Love, Leslie Barclay.**

**I will remember Fizz' desire to establish EcoVersity and release her dream into actuality as an inspiration for all of us. She waded into the unknown with her perceptions of what was needed constantly evolved with each new voice and idea she heard. Fizz created the foundation for an educational system where Nature, as the true teacher, is now actualizing.**

B.J. Harris

**I will sorely miss working with Fiz, whom I first met under a tree at the South End of the Santa Fe Farmer's Market. She was handing out very small brochures about the concept of EcoV-ersity. I gave her my card and for proba- bly 30 minutes we discussed the place of chickens and other poultry within sustainable/small farm ecosystems.**

**Fizz was a true planetary citizen and her presence always added to the synergy of an action.**

John Allen, Biosphere Foundation

**In a word, we "Grokked". (yes, youngsters, you'll have to look that up - Robert Heinlein - *Stranger in a Strange Land*). We left that conversation with her saying she "would contact me". Yeah, sure. I've been a Consultant for many years, and 96% of the folks who are going to "contact" never do.**

**Lo and Behold, Fiz Did Indeed Contact Me - (through Amy Pilling) and the Rest is History. Chicken classes at EcoVersity.**

**I feel confident Fiz would be happy with my "plan" for next year: a Spring Chicken course: "Get 'Em raised and laying" and a Fall Chicken course: "Keep 'Em Happy and Laying during the Winter". She will be sorely missed; However, her legacy lives on and that responsibility falls to we Faculty and Staff. God Help Us.**

**Sincerely,  
David Sullenberger, Poultry Biologist**

**My first meeting with Fiz at her home in Chimayo was our best time. It had that give and take, that intellectual discovery, of a great first impression. My husband, Michael, and other Chimayo friends talked about everything. Is he or is he not a shaman? A combination of high gossip and learning. I promised to show her a video I had of Allen Ginsberg, a promise I didn't keep. She told us about her plans for EcoV-ersity, at that time sited in a beauty shop she was buying and mostly on-line.**

**When I got to teach at the first round of classes it was an honor and a pleasure. My mom was dying and died in the middle of the course, but we made it through. When I met Fiz I thought, "This woman could be my teacher." I didn't know how sick she was. The last time we met, she still had high hopes, vision, and still wanted us to be a part of it. I operate on the personal. I learned what it means to operate more on the communal and larger scale. I also know that when I am dying, I will tell people and maybe they will take me more seriously. I wish I had known and been able to send Fiz off with some sweetness that both Michael and I felt.**

Joan Logghe

**Remembering that years ago Fiz and I and a group of us met at St. Catherine's to talk of creating a new kind of school.**

**Remembering that Fiz always had time to nourish my dreams.**

**Realizing that she made dreams come true.**

Priscilla Logan

**We stayed up all night many a night in Boulder. We walked in the Himalayas, cruised around Kathmandu, and danced in Bali. She took apart my writing projects with incisive questions and I found new texts through her sharp inquiry. She was always trying something new and true.**

**Dear Fiz, twenty-five years of friendship with you continues.**

Joan Halifax





## ECOVERSITY PERMACULTURE DESIGN COURSE

This is a 72-hour permaculture certification course held at the EcoVersity campus in Santa Fe, NM. Taught by Scott Pittman & faculty. This course may be taken alone or as part of the new EcoVersity Certificate for Earth-Based Vocations.

## ECOVERSITY CERTIFICATE FOR EARTH-BASED VOCATIONS

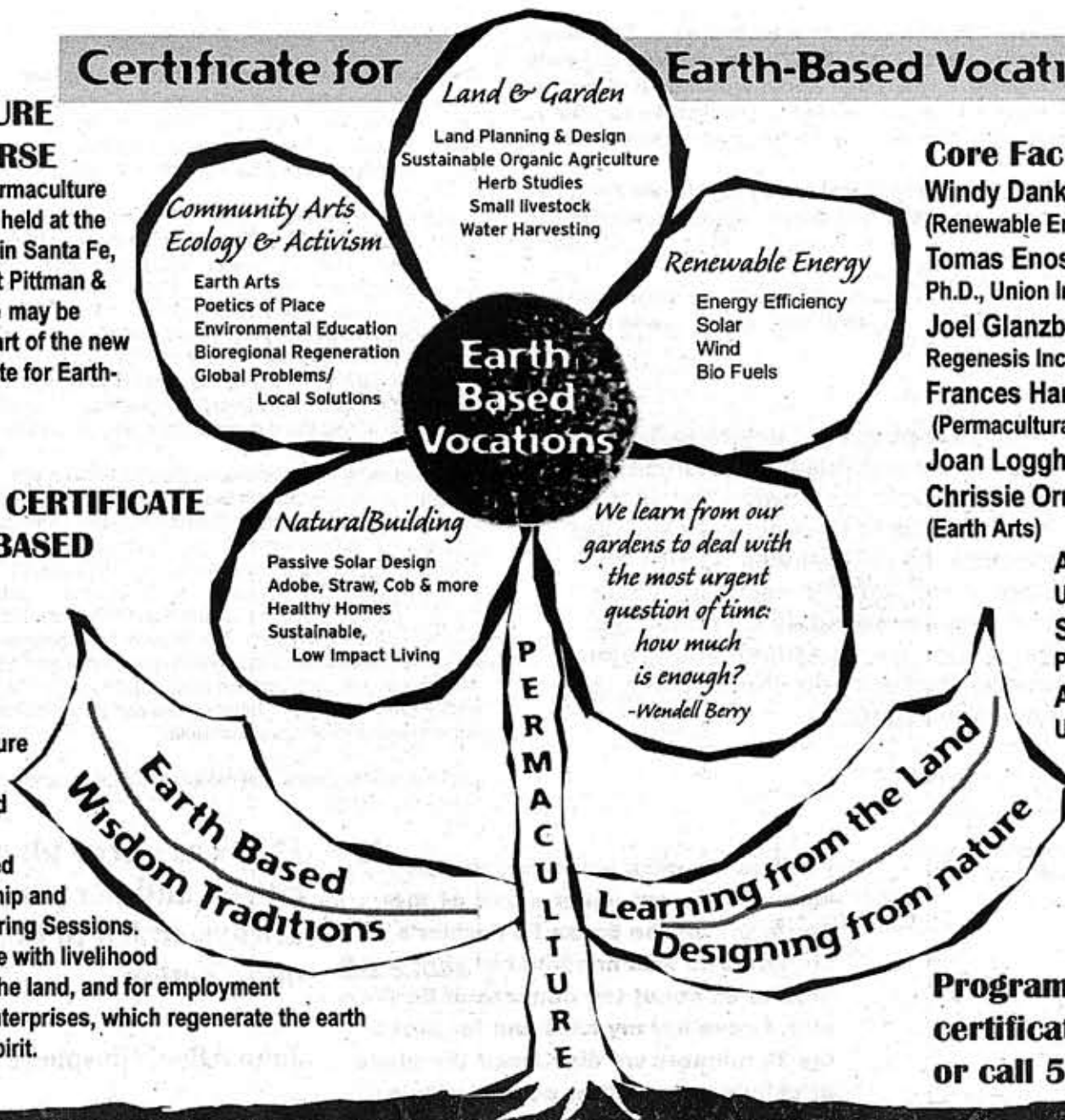
Whole systems approaches for designing human environments.

- \* 2-week Permaculture Design Course.
- \* 8-week Skill-Based Practicums.
- \* 10-week Site-Based Mentored Internship and EcoVersity Mentoring Sessions.

Graduates will leave with livelihood skills for living on the land, and for employment with earth-based enterprises, which regenerate the earth and revitalize the spirit.

## Certificate for

## Earth-Based Vocations



## Core Faculty (partial list)

Windy Dankoff, Dankoff Solar Products (Renewable Energy)

Tomas Enos, BA, Ohio U., MA Prescott College, Ph.D., Union Institute & U., Milagro Herbs (Herbs)

Joel Glanzberg, BA, St. John's College, Regenes Inc. (Agroecology)

Frances Harwood, PhD, Cultural Anthropology, (Permacultura America Latina) In Memoria

Joan Logghe, Writer, Poet, Teacher (Earth Arts)

Chrissie Orr, MA, Edinburgh College of Art (Earth Arts)

Amy Pilling, BA, Scripps College, Universität Heidelberg (Permaculture)

Scott Pittman, BA MA, U. of Texas Permaculture institute (Permaculture)

Alfred vonBachmayr, B of Arch, U. of Colorado (Natural Building)

## Program Inquiries:

[certificate@ecoversity.org](mailto:certificate@ecoversity.org)  
or call 505.424.9797

# Earth Based Learning — Sustainable Living

## BECOME CERTIFIED THROUGH ECOVERSITY

Join the fast growing field of professionals who are developing whole system approaches for the design of human environments. Such place-based systems integrate land planning, natural building, renewable energies, water harvesting, and small to large-scale agricultural production. The EcoVersity faculty of practical visionaries design from nature, and draw inspiration from such disciplines as permaculture, deep ecology, biomimicry, ecological design, and the bioregional movement. These practices are based on observing and designing from the natural world. While acutely aware of the environmental problems besetting the world, our faculty is dedicated to the research and implementation of practical solutions.

**The Certificate Program** is for learners of all ages, ethnicities, and walks of life who are seeking livelihood skills, both intellectual and practical, for living on the land. The Certificate provides professional development leading to work as planners, designers, builders, gardeners, educators, eco-artists and activists. As leaders and exemplars of sustainable living, our graduates will be equipped to make contributions which regenerate the earth and revitalize the spirit.

## Curriculum \* Two 10-week Terms

### Term I \* 10 Weeks Tuition: TBA

(Students who have completed the Permaculture Course prior to registering for The Certificate program will pay a discounted (TBA) tuition for Term I.)

Weeks 1 & 2: Permaculture Design Course

Weeks 3- 10: Skill-Based Practicums

- \* Natural Building
- \* Land & Garden
- \* Renewable Energy
- \* Community Arts & Earth Activism
- \* Seminar for Earth-based Vocations
- \* Ecological Design
- \* Electives

### Term II \* 10 Weeks Tuition: TBA

- \* Site-Based Mentored Internship
- \* EcoVersity Mentoring Sessions

## 2004 Certificate Program Dates

### Permaculture Course

Dates: TBA

### Spring 2004

Certificate Term

Dates: TBA

Visit [www.ecoversity.org](http://www.ecoversity.org) for further details.

### Summer 2004

Certificate Term \* TBA



Sunday	Monday	Tuesday	Wednesday	Thursday	Friday	Saturday
14 September	15	16	17	18 7-9 Enlivening	19	20 9-6 Dyeing 9-4 Drought
21 9-6 Dyeing	22 9-3 Env. Ed	23 9-3 Env. Ed 6-8 Herbs 6:30-9 Myth 7-8:30 Simone Swan Lecture	24 9-11:30 Gdns in Schools 6:30-9 Indigenous Ag	25 9-10:30 Qigong 6-8:30 Intro Solar 6-8:30 Sing Green 7-9 Enlivening	26 6:30-9 Indigenous Ag	27 9-4 Erosion 9-1 Indigenous Ag 10-4 Horno 1
28 10-4 Horno 1	29	30 6-8:30 EcoDesign 6-8 Herbs 6:30-9 Myth 6:30-9 Restore Watershed	1 October 9-11:30 Gdns in Schools	2 9-10:30 Qigong 5:30-6:30 Water Sys. 6-8:30 Intro Solar 6-8:30 Sing Green 7-9 Enlivening	3 5:30-6:30 Greywater	4 9-4 Windbreak 1:30-5 Greywater
5 9-5 Greywater	6	7 6-8:30 EcoDesign 6-8 Herbs 6:30-9 Myth 6:30-9 Restore Watershed	8 9-11:30 Gdns in Schools	9 9-10:30 Qigong 6-8:30 Intro Solar 6-8:30 Sing Green 7-9 Enlivening	10	11 10-4 Horno 2
12 10-4 Horno 2	13 6-8:30 Globalization 6:30-9 Nat. Bldg.	14 6-8:30 EcoDesign 6-8 Herbs 6:30-9 Myth 6:30-9 Restore Watershed	15 9-11:30 Gdns in Schools	16 9-10:30 Qigong 6-8:30 Intro Solar 6-8:30 Sing Green 7-9 Enlivening	17	18 8:30-5:30 Awareness 1-5 Restore Water- shed
19	20 6-8:30 Globalization 6:30-9 Nat. Bldg.	21 6-8:30 EcoDesign 6-8 Herbs 6:30-9 Myth 6:30-9 Restore Watershed	22 9-11:30 Gdns in Schools	23 9-10:30 Qigong 6-8:30 Intro Solar 6-8:30 Sing Green 6:30-9 Menopause 7-9 Enlivening	24 6-8:30 Green Prod. Lecture	25 10-4 Nat. Bldg. 10-3 Green Prod
26 Rain Date 8:30-5:30 Awareness	27	28 6-8:30 EcoDesign 6-8 Herbs 6:30-9 Myth	29 9-11:30 Gdns in Schools	30 9-10:30 Qigong 6-8:30 Intro Solar 6-8:30 Sing Green 6:30-9 Menopause	31 7-8:30 BioDiesel Lecture	1 November 10-5 BioDiesel 10-3 Const EcoSys- tems 10-3 Green Products
2 10-5 BioDiesel 10-3 Const EcoSys- tems	3	4 6-8:30 EcoDesign 6-8 Herbs 6:30-9 Myth	5 9-11:30 Gdns in Schools	6 9-10:30 Qigong 6-8:30 Intro Solar 6-8:30 Sing Green 6:30-9 Menopause	7	8
9	10	11 6-8:30 EcoDesign 6:30-9 Myth	12 9-11:30 Gdns in Schools	13 9-10:30 Qigong 6-8:30 Intro Solar 6-8:30 Sing Green 6:30-9 Menopause	14	15
16	17	18 6-8:30 EcoDesign	19	20 9-10:30 Qigong	21	22

MAIL TO: EcoVersity, Attn: Registrar  
2639 Agua Fria Santa Fe, NM 87505

Fall 2003 CE Registration

\*100% refund issued before the first class meeting. Transfers honored before the second class meeting (for a course - same price or less; valid for one year). No transfers issued after attendance of second class.

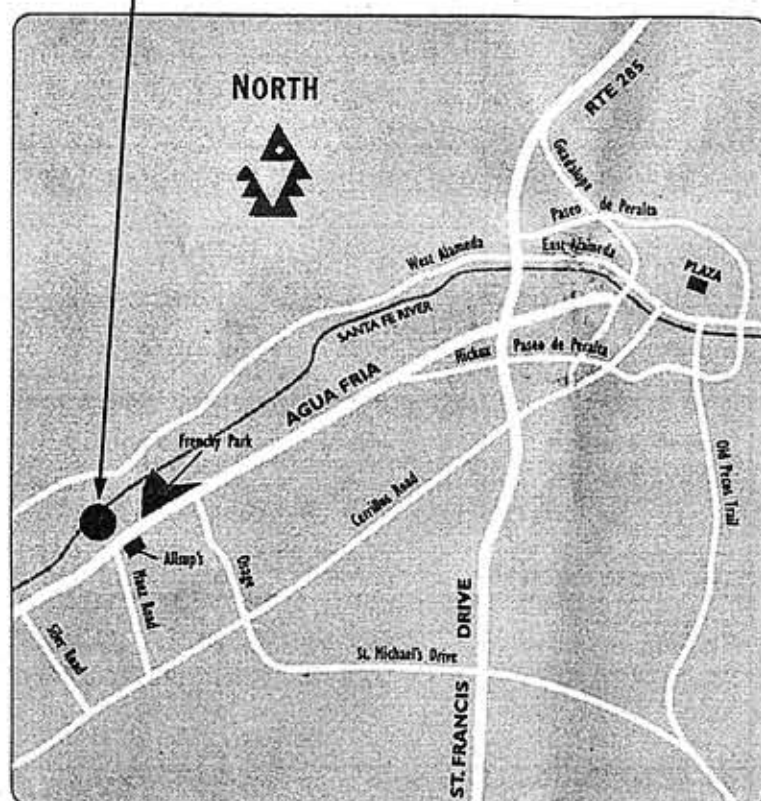
Name: \_\_\_\_\_ Home Phone: \_\_\_\_\_  
Email: \_\_\_\_\_  
Address: \_\_\_\_\_ City: \_\_\_\_\_ State: \_\_\_\_\_ Zip: \_\_\_\_\_

COURSE	AMOUNT
1)	\$
2)	\$
3)	\$
4)	\$
5)	\$
REGISTRATION FEE	\$10.00
TOTAL	\$

\*EcoVersity does not discriminate on the basis of gender, race, religion, ethnicity, age, or sexual orientation.

## Administration

**ECOVERSITY: On-Line Campus/Land-Based Learning**  
2639 Agua Fria, Santa Fe, New Mexico 87505



Traveling on St. Francis Drive: turn South onto Agua Fria, go two miles and look on your left for Allsup's gas station, on your right for the EcoVersity. Look for the green sign, turn in driveway.

Ana Willem, *Administrative Assistant (Rentals)*, ext 4#  
[admin@ecoversity.org](mailto:admin@ecoversity.org)  
Nathan Houchin, *Land Coordinator & Registrar*, ext 1#  
[nathan@ecoversity.org](mailto:nathan@ecoversity.org)  
Amy Pilling, *Dean, Curriculum Development & P.R.*, ext 2#  
[apilling@ecoversity.org](mailto:apilling@ecoversity.org)  
Marc Nelson, *Technical Director*, ext 3#  
[marc@ecoversity.org](mailto:marc@ecoversity.org)

### HOW TO REGISTER

ON-LINE: [www.ecoversity.org](http://www.ecoversity.org)  
BY PHONE: 505.424.9797 ext. 1#  
BY MAIL: EcoVersity  
Attn: Registrar  
2639 Agua Fria  
Santa Fe, NM 87505

## Policy

- \* Enroll Early — courses or workshops with less than eight registered students may be cancelled at the instructor's and EcoVersity's discretion one week before the start date.
- \* 100% refund issued before the first class meeting. Transfers honored before the second class meeting (for a course - same price or less; valid for one year). No transfers issued after attendance of second class.
- \* Work study and internship positions are available on the land, in the library and with the administration. Call to inquire.
- \* EcoVersity does not discriminate on the basis of gender, race, religion, ethnicity, age, or sexual orientation.



# EcoVersity

2639 Agua Fria, Santa Fe, NM 87505  
[info@ecoversity.org](mailto:info@ecoversity.org) [www.ecoversity.org](http://www.ecoversity.org)  
505.424.9797

NONPROFIT ORG  
US POSTAGE PAID  
SANTA FE, NM  
PERMIT #402

## 2003 Fall Catalogue

**Continuing Education Courses and Workshops Begin September 22nd!**

### LOOK INSIDE FOR:

\*Continuing Education Courses and Workshops  
Including  
\*Permaculture\*Bio-Diesel\*Solar\*Herbs\*Greywater\*  
And more!

